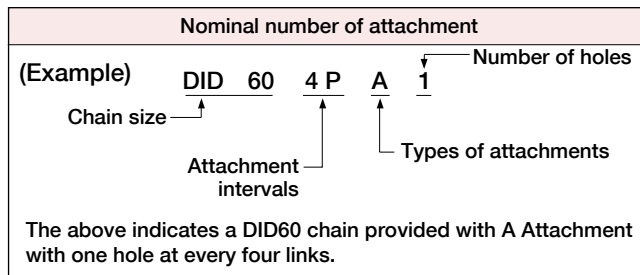


Standard Attachments

For "DID Small Conveyor Chains", various links are available for coupling and attaching custom devices directly to the chains. These links are called attachments. The following standard attachments are available.

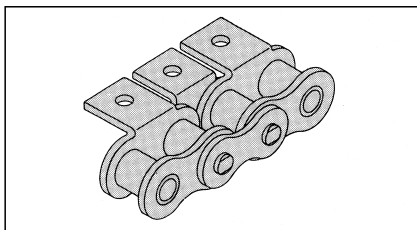
Types and names of standard attachments

DID standard attachments include five kinds for single pitch chains and five kinds for double pitch chains as illustrated below. Furthermore, for single pitch chains, four kinds of wide attachments, as wide as outer plates, are available. Standard attachments for respective chain sizes are listed on the following page.

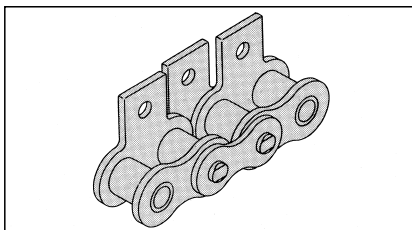


Attachment

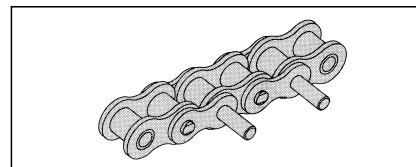
A (Bent attachment on one side)



SA (Straight attachment on one side)

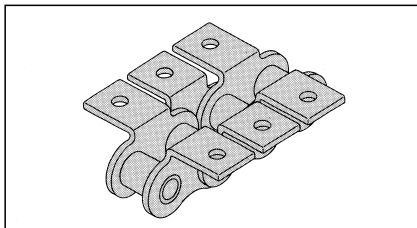


D (Extended pin)

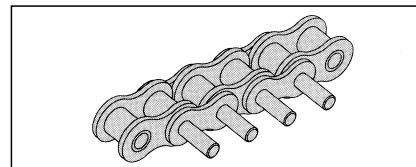
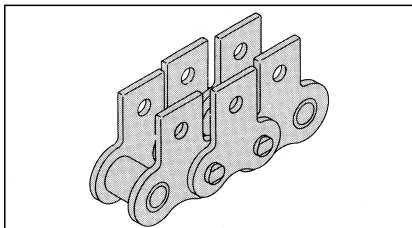


Above figure shows D1 (with an extended pin on every two links)

K (Bent attachments on both sides)



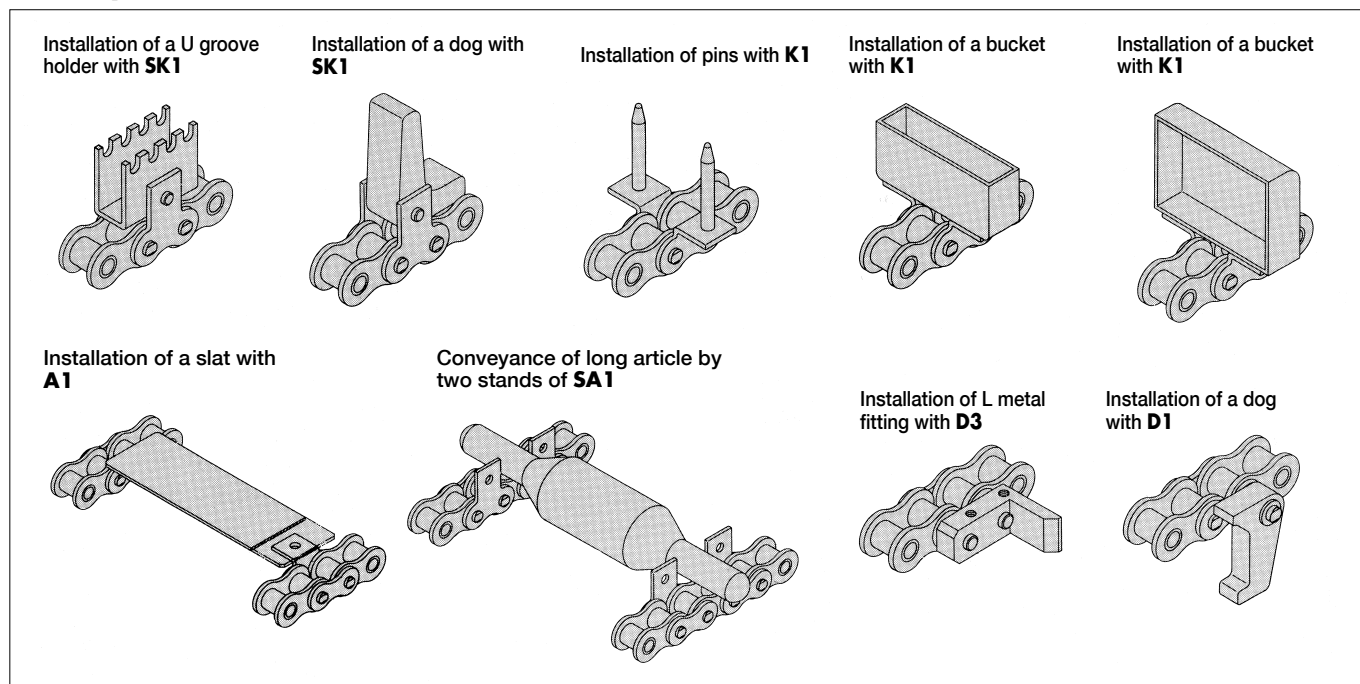
SK (Straight attachments on both sides)



Above figure shows D3 (with an extended pin on every link)

Ref : D pin in longer length is called "LP attachment" (abbreviation of Long Pin)

Example of use of standard attachment



Standard Attachment Chart

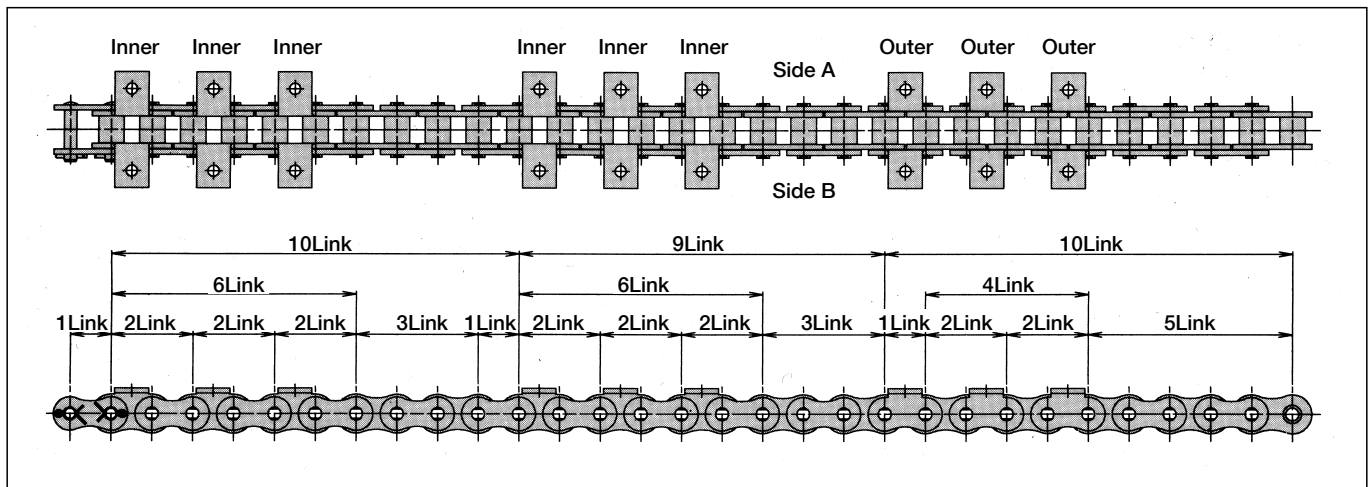
○ : In stock
 △ : Made-to-order
 × : Special

		DID standard attachment																	
		Standard type									Wide type								
		One-side bent		Both-side bent		One-side straight		Both-side straight		Extended pin		One-side bent		Both side bent		One-side straight		Both-side straight	
		A1	A2	K1	K2	SA1	SA2	SK1	SK2	D1	D3	WA1	WA2	WK1	WK2	WSA1	WSA2	WSK1	WSK2
Single pitch	DID 25	△	×	△	×	△	×	△	×	△	△								
	DID 35	△	×	△	×	△	×	△	×	△	△								
	DID 41	△	×	△	×	△	×	△	×	×	×								
	DID 40	○	×	○	×	△	×	△	×	△	△	△	△	△	△	△	△	△	
	DID 50	○	×	○	×	△	×	△	×	△	△	△	△	△	△	△	△	△	
	DID 60	○	×	○	×	△	×	△	×	△	△	△	△	△	△	△	△	△	
	DID 80	○	×	○	×	△	×	△	×	△	△	△	△	△	△	△	△	△	
	DID 100	○	×	○	×	△	×	△	×	△	△	△	△	△	△	△	△	△	
	DID 120	○	×	○	×	△	×	△	×	△	△	×	×	×	×	×	×	×	
	DID 140	△	×	△	×	△	×	△	×	△	△								
	DID 160	△	×	△	×	△	×	△	×	△	△								
	DID 200	△	×	△	×	△	×	△	×	△	△								
DID 240	△	×	△	×	△	×	△	×	×	×									

Small Conveyor Chains

Single Pitch

How to indicate the specially arranged chains with attachments



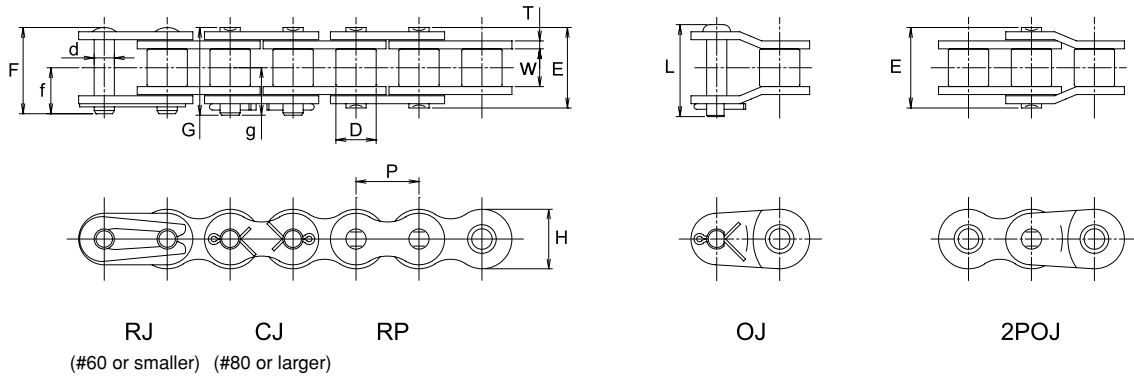
A chain with Attachment K1 specially arranged as above is indicated as follows:

$$CJ + (K1 \text{ inner} + PL) \times 3 + 3LL + PL + (K1 \text{ inner} + PL) \times 3 + 3LL + K1 \text{ outer} + (RL + K1 \text{ outer}) \times 2 + 5LL$$

"CJ" stands for a C connecting link; "K1 inner", an inner link Attachment K1; "PL", an outer link; "3LL", three links from an inner link to an inner link; "K1 outer", an outer link Attachment K1; and "RL", an inner link, respectively. A "+" sign means "connection", and a "×" sign means "repeat". (For one-side attachments such as Attachment A and Attachment SA, the position of attachment plates is on side A in the above illustration.)

Consult us for other arrangements that cannot be indicated as above.
 Note: When attaching attachments to every even-number link, they are attached to outer links, unless specified.

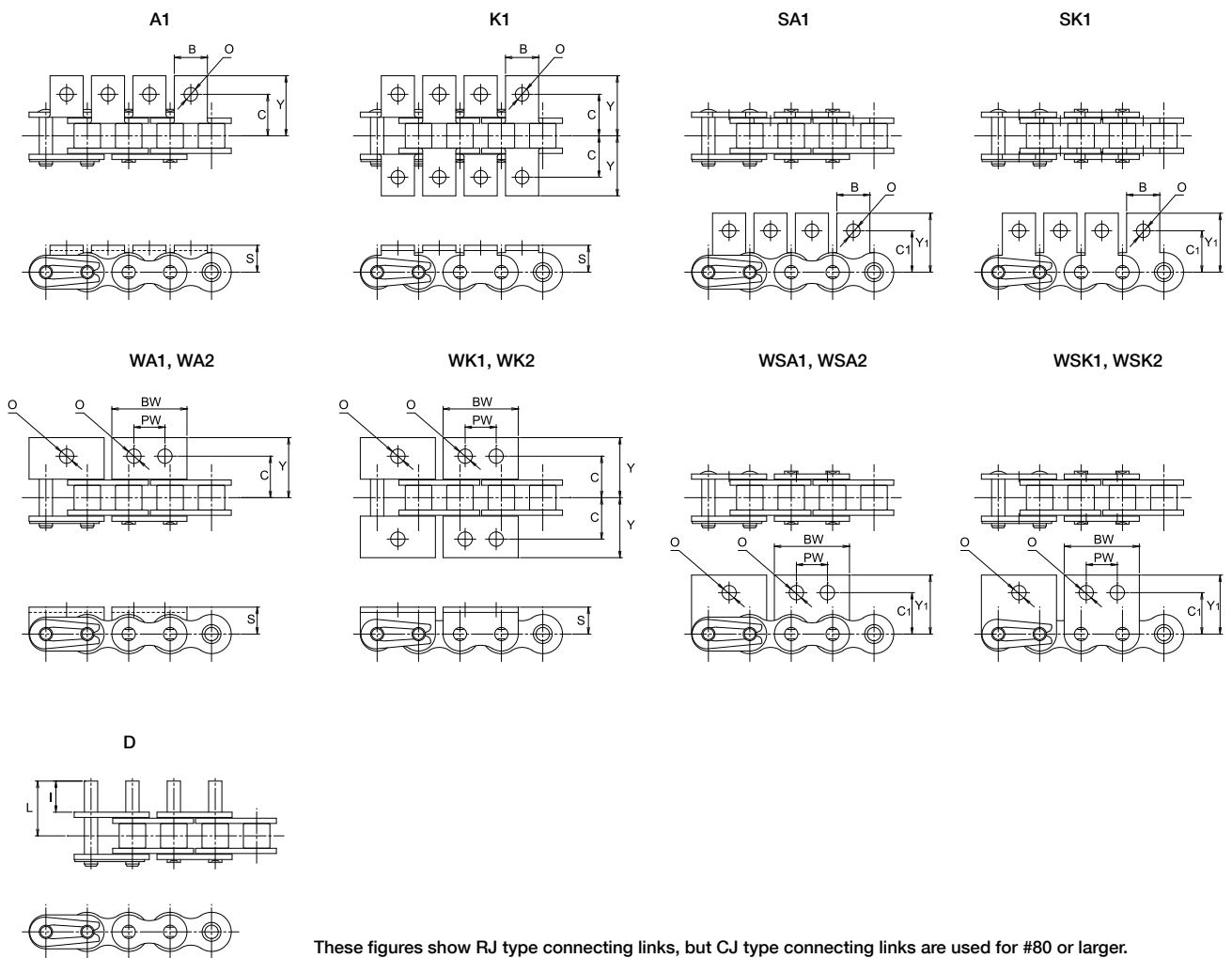
Chain



Small Conveyor Chains

Single Pitch

Attachment



Dimensions of Standard Roller Chain (Single pitch)

• Dimensions of Chain

Chain No.	Pitch P	Roller link width W	Roller (bushing) dia. D	Pin								Plate		Avg. tensile strength		Max. allowable load		Approx. weight without attachments (kg/m)
				d	E	F	G	L	f	g	T	H	kN	kgf	kN	kgf		
				Unit (mm)														
* DID 25	6.35	3.18	(3.30)	2.31	7.8	8.5	—	—	4.7	—	0.72	5.9	4.02	410	0.63	65	0.13	
* DID 35	9.525	4.78	(5.08)	3.59	12.0	13.1	—	—	7.3	—	1.25	9.0	9.31	950	1.47	150	0.32	
DID 41	12.70	6.38	7.77	3.59	13.7	14.6	—	15.5	7.9	—	1.20	9.6	10.1	1,030	1.67	170	0.39	
DID 40	12.70	7.95	7.92	3.97	16.5	17.6	18.1	19.1	9.5	10.1	1.50	12.0	16.6	1,700	2.64	270	0.63	
DID 50	15.875	9.53	10.16	5.09	20.3	21.9	22.1	23.2	11.6	12.1	2.00	15.0	27.9	2,850	4.41	450	1.06	
DID 60	19.05	12.70	11.91	5.96	25.4	26.9	27.9	29.8	14.3	15.1	2.40	18.1	40.2	4,100	6.37	650	1.44	
DID 80	25.40	15.88	15.88	7.94	32.6	—	35.4	37.1	—	19.0	3.20	24.0	78.4	8,000	10.7	1,100	2.55	
DID100	31.75	19.05	19.05	9.54	39.5	—	42.5	45.2	—	22.7	4.00	29.9	118	12,100	17.1	1,750	3.79	
DID120	38.10	25.40	22.23	11.11	49.7	—	53.0	54.0	—	28.2	4.80	35.9	166	17,000	24.5	2,500	5.49	
DID140	44.45	25.40	25.40	12.71	53.6	—	58.4	59.6	—	31.6	5.60	41.9	215	22,000	32.3	3,300	7.11	
DID160	50.80	31.75	28.58	14.29	63.6	—	68.2	69.7	—	36.5	6.40	47.8	269	27,500	41.2	4,200	9.82	
DID200	63.50	38.10	39.68	19.85	77.9	—	85.0	87.3	—	45.9	8.00	60.0	470	48,000	68.6	7,000	16.50	

• Dimensions of attachment

Chain No.	Pitch P	A1, K1			SA1, SK1		Common dimensions		D		Approx. additional weight per attachment (kg)		
		C	Y	S	C₁	Y₁	B	O	I	L	A,SA	K,SK	D
* DID 25	6.35	7.15	10.7	4.76	7.94	11.50	5.56	3.4	6.00	9.3	0.0003	0.0006	0.00002
* DID 35	9.525	9.52	14.4	6.35	9.52	14.70	7.94	3.5	9.52	14.6	0.001	0.002	0.0009
DID 41	12.70	11.91	17.5	7.14	12.30	17.50	9.53	3.5	9.52	15.4	0.0015	0.003	0.0009
DID 40	12.70	12.70	17.6	7.92	12.70	17.50	9.53	3.5	9.52	16.8	0.002	0.004	0.001
DID 50	15.875	15.88	23.0	10.31	15.88	22.60	12.70	5.2	11.91	21.0	0.003	0.006	0.002
DID 60	19.05	19.05	27.0	11.91	18.26	26.20	15.88	5.2	14.27	25.7	0.006	0.012	0.003
DID 80	25.40	25.40	34.9	15.88	24.61	34.05	19.05	6.8	19.05	33.9	0.011	0.022	0.007
DID100	31.75	31.75	43.3	19.84	31.75	42.75	25.40	8.7	23.83	41.9	0.024	0.048	0.012
DID120	38.10	38.10	53.2	23.01	36.53	50.30	28.58	10.3	28.58	51.4	0.037	0.074	0.02
DID140	44.45	44.45	61.9	28.58	44.45	62.40	34.92	12.3	33.32	57.8	0.068	0.136	0.03
DID160	50.80	50.80	69.9	31.75	50.80	68.10	38.10	14.3	38.10	67.4	0.091	0.182	0.045
DID200	63.50	63.50	90.0	42.87	63.50	84.50	47.60	17.0	47.62	83.4	0.186	0.372	0.106

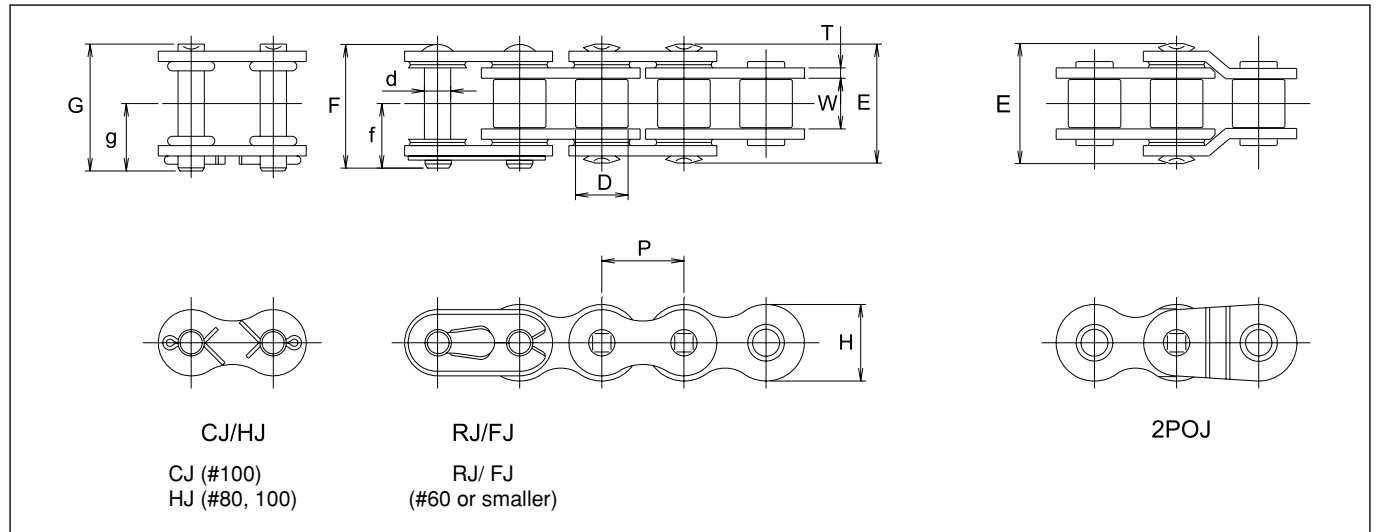
• Dimensions of wide attachment

Chain No.	Pitch P	WA1, WA2, WK1, WK2			WSA1, WSA2, WSK1, WSK2		Common dimensions			Approx. additional weight per attachment (kg)	
		C	Y	S	C₁	Y₁	O	Bw	Pw	WA,WSA	WK,WSK
DID 40	12.70	12.70	17.6	7.92	12.70	17.5	4.5	23.0	9.5	0.003	0.006
DID 50	15.875	15.88	23.0	10.31	15.88	22.6	5.5	28.8	11.9	0.007	0.014
DID 60	19.05	19.05	27.0	11.91	18.26	26.2	6.6	34.6	14.3	0.012	0.024
DID 80	25.40	25.40	34.9	15.88	24.61	34.1	9.0	46.1	19.1	0.026	0.052
DID100	31.75	31.75	43.3	19.84	31.75	42.8	11.0	57.8	23.8	0.051	0.102

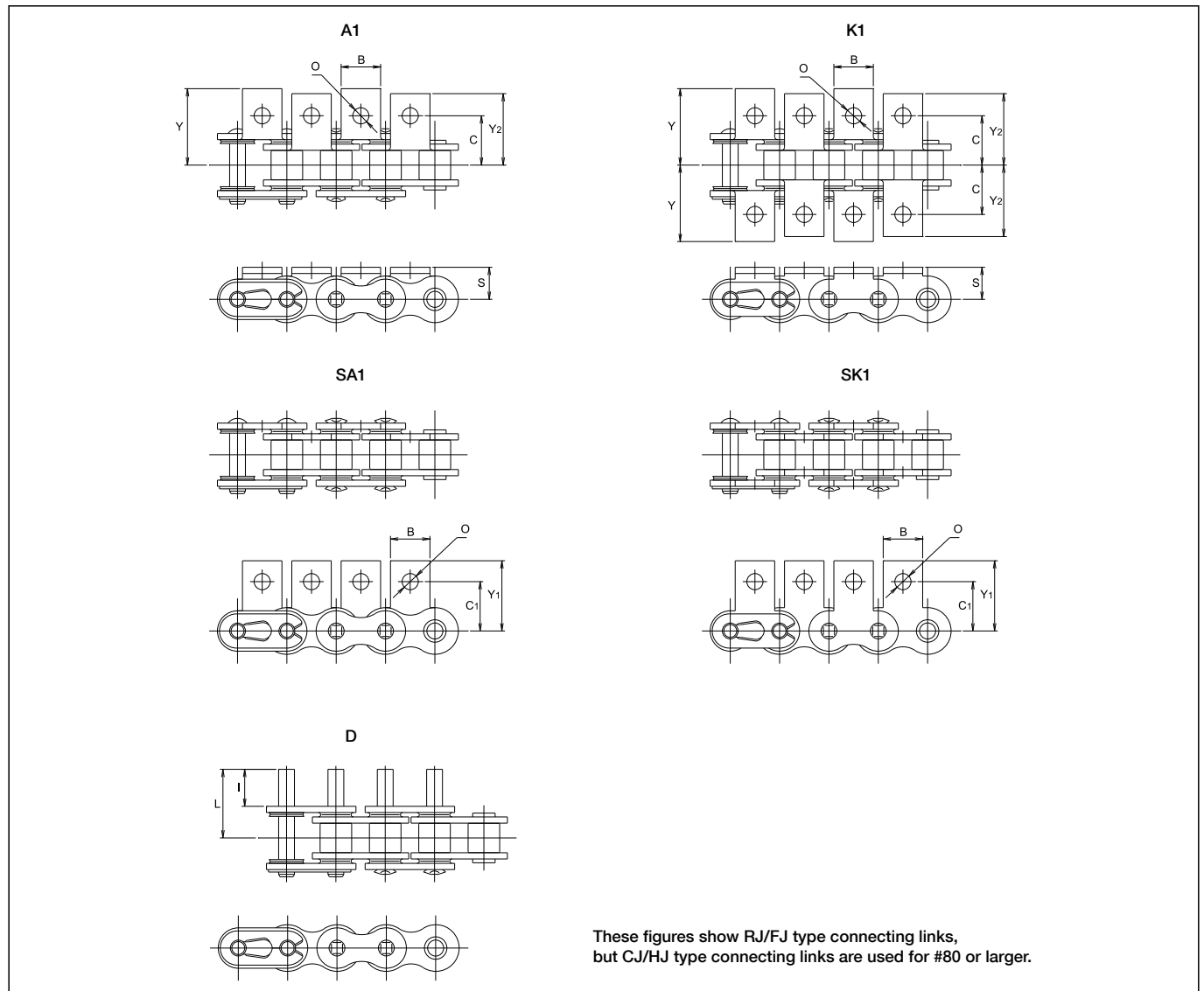
Note: 1. Those marked with * indicate Bushing Chain.

2. The values of the Avg. tensile strength and Max. allowable load are for the chain (attachments aren't included).

Chain



Attachment



Small Conveyor Chains

Single Pitch



Dimensions of O-Ring/ X-Ring Chains (Single pitch)

• Dimensions of Chain

Unit (mm)

Chain No.		Pitch P	Roller link width W	Roller (bush) dia. D	Pin						Plate		Avg. tensile strength		Max. allowable load		Approx. weight without attachments (kg/m)
Standard	Nickel plated				d	E	F	G	f	g	T	H	kN	kgf	kN	kgf	
DID 40LX	DID 40LXN	12.70	7.95	7.92	3.97	20.0	20.0	—	10.7	—	1.5	12.0	16.6	1,690	2.64	270	0.67
DID 50LX	DID 50LXN	15.875	9.53	10.16	5.09	23.4	23.9	—	12.8	—	2.0	15.0	27.9	2,830	4.41	450	1.08
DID 60LX	DID 60LXN	19.05	12.70	11.91	5.96	29.2	30.0	—	16.0	—	2.4	18.1	40.2	4,080	6.37	650	1.62
DID 80LD	DID 80LDN	25.40	15.88	15.88	7.94	36.5	—	38.5	—	20.9	3.2	24.0	72.5	7,360	10.7	1,090	2.83
DID100LD	DID100LDN	31.75	19.05	19.05	9.54	44.0	—	46.2	—	24.7	4.0	29.9	107	10,860	17.1	1,740	4.07

Note: The values of the Avg. tensile strength and Max. allowable load are for chain bodies (attachments aren't included).

• Dimensions of attachment

Chain No.		A1, K1				SA1, SK1		Common dimensions		Attachment D		Approx. additional weight per attachment (kg)		
Standard	Nickel plated	C	Y	Y₂	S	C₁	Y₁	B	O	I	L	A,SA	K,SK	D
DID 40LX	DID 40LXN	12.70	18.8	17.6	7.92	12.70	17.50	9.53	3.5	9.52	17.9	0.002	0.004	0.001
DID 50LX	DID 50LXN	15.88	24.1	23.0	10.31	15.88	22.60	12.70	5.2	11.91	22.1	0.003	0.006	0.002
DID 60LX	DID 60LXN	19.05	28.4	27.0	11.91	18.26	26.20	15.88	5.2	14.27	27.2	0.006	0.012	0.003
DID 80LD	DID 80LDN	25.40	36.7	34.9	15.88	24.61	34.05	19.05	6.8	19.05	35.4	0.011	0.022	0.007
DID100LD	DID100LDN	31.75	45.1	43.3	19.84	31.75	42.75	25.40	8.7	23.83	43.6	0.024	0.048	0.012

Note: Consult us for the use of Attachment WA, WSA, WK, and WSK for O-Ring Chains.

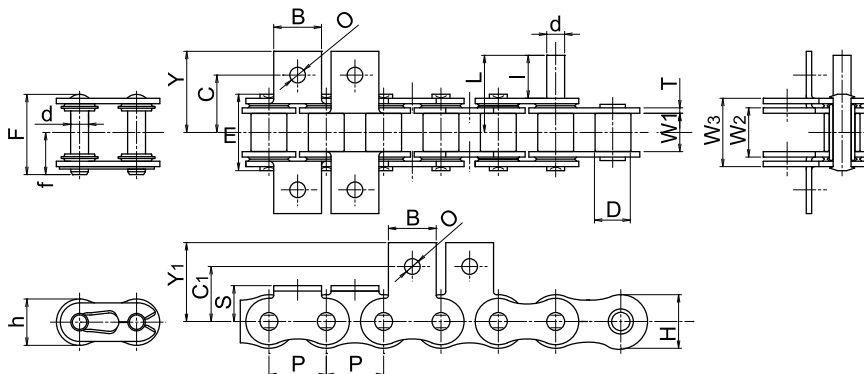
• Dimensions of Chain

Unit (mm)

Chain No.		Pitch P	Roller link width W1	Roller link width W2	Roller link width W3	Roller (bush) dia. D	Pin				Plate			Avg. tensile strength		Max. allowable load		Approx. weight without attachments (kg/m)
Standard	Nickel plated						d	E	F	f	T	H	h	kN	kgf	kN	kgf	
DID 40LF	DID 40LFN	12.70	7.95	10.65	14.45	7.92	3.97	16.5	17.6	9.5	1.25	12.0	10.4	16.6	1,690	2.64	270	0.58
DID 50LF	DID 50LFN	15.875	9.53	12.80	18.15	10.16	5.09	20.3	21.9	11.6	1.50	15.0	13.0	27.9	2,830	4.41	450	0.92
DID 60LF	DID 60LFN	19.05	12.70	16.55	22.9	11.91	5.96	25.4	26.9	14.3	1.80	18.1	15.6	40.2	4,080	6.37	650	1.37

• Dimensions of attachment

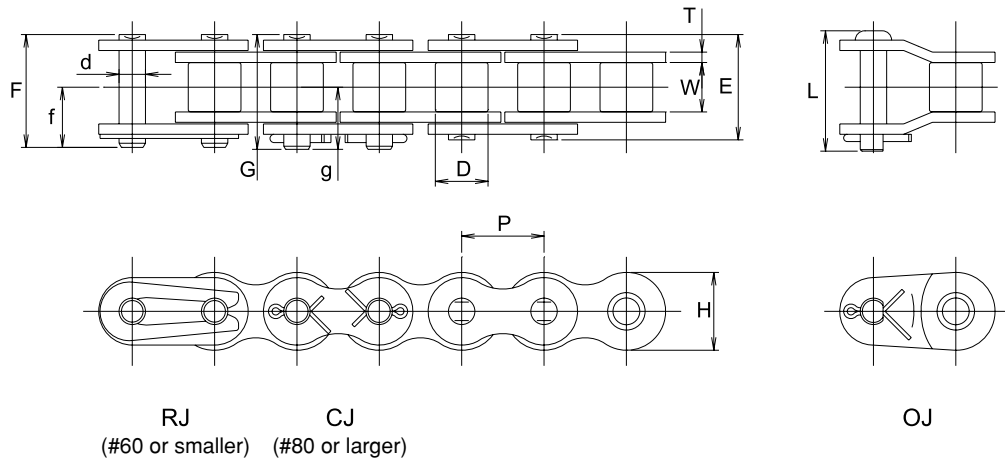
Chain No.		A1, K1			SA1, SK1		Common dimensions		D		Approx. additional weight per attachment (kg)		
Standard	Nickel plated	C	Y	S	C1	Y1	B	O	I	L	A,SA	K,SK	D
DID 40LF	DID 40LFN	12.7	17.6	7.92	12.70	17.5	9.53	3.5	9.52	16.8	0.002	0.004	0.002
DID 50LF	DID 50LFN	15.88	23.0	10.31	15.88	22.6	12.70	5.2	11.91	21.0	0.003	0.006	0.003
DID 60LF	DID 60LFN	19.05	27.0	11.91	18.26	26.2	15.88	5.2	14.27	25.7	0.005	0.010	0.007



Small Conveyor Chains

Single Pitch

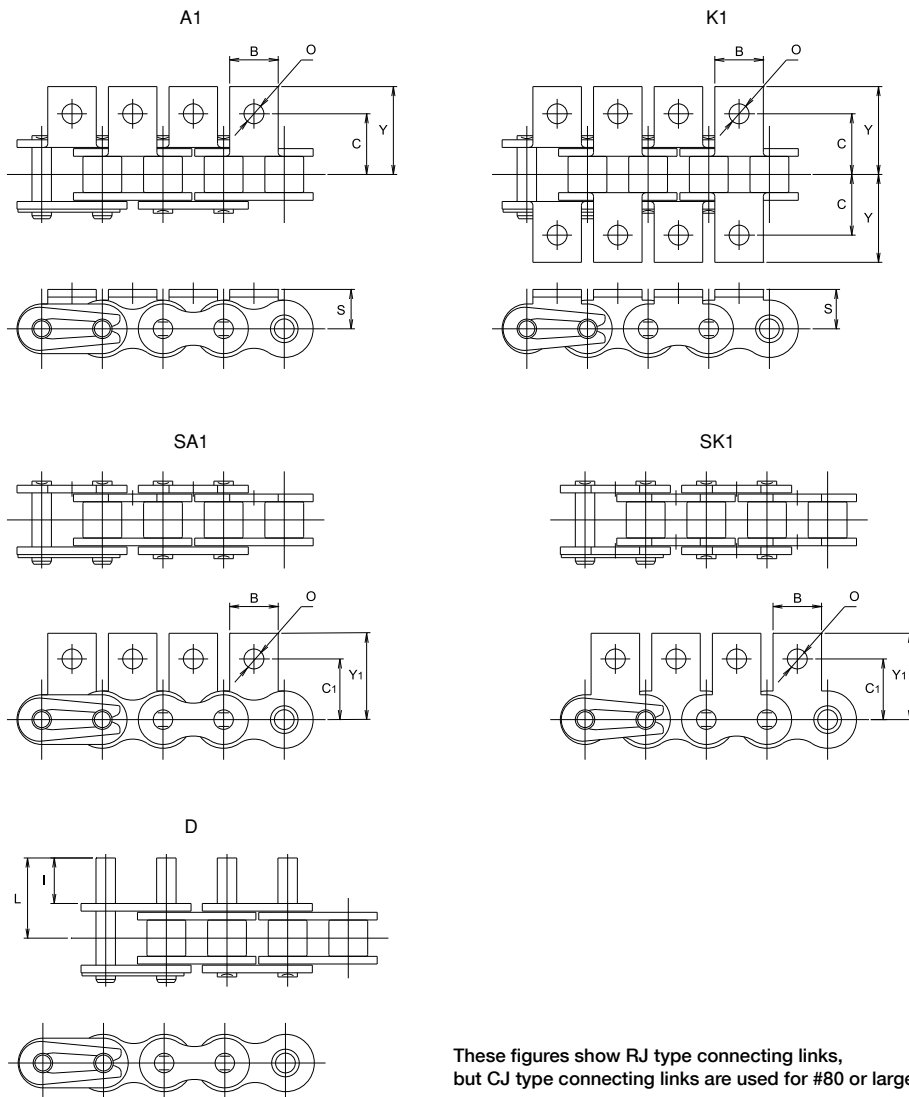
Chain



Small Conveyor Chains

Single Pitch

Attachment



These figures show RJ type connecting links, but CJ type connecting links are used for #80 or larger.



Dimensions of Sintered Bushing Roller Chain (Single pitch)

• Dimensions of Chain

Unit (mm)

Chain No.		Pitch P	Roller link width W	Roller (bush) dia. D	Pin							Plate		Avg. tensile strength		Max. allowable load		Approx. weight without attachments (kg/m)
Standard	Nickel plated				d	E	F	G	L	f	g	T	H	kN	kgf	kN	kgf	
DID C40 UR	DID C40 URN	12.70	7.95	7.92	3.97	16.5	17.6	—	19.1	9.5	—	1.5	12.0	15.6	1,580	2.64	270	0.63
DID C50 UR	DID C50 URN	15.875	9.53	10.16	5.09	20.3	21.9	—	23.2	11.6	—	2.0	15.0	25.4	2,580	4.31	440	1.06
DID C60 UR	DID C60 URN	19.05	12.70	11.91	5.96	25.4	26.9	—	29.8	14.3	—	2.4	18.1	37.2	3,780	6.27	640	1.44
DID C80 UR	DID C80 URN	25.40	15.88	15.88	7.94	32.6	—	35.4	37.1	—	19.0	3.2	24.0	68.6	6,960	10.7	1,090	2.67

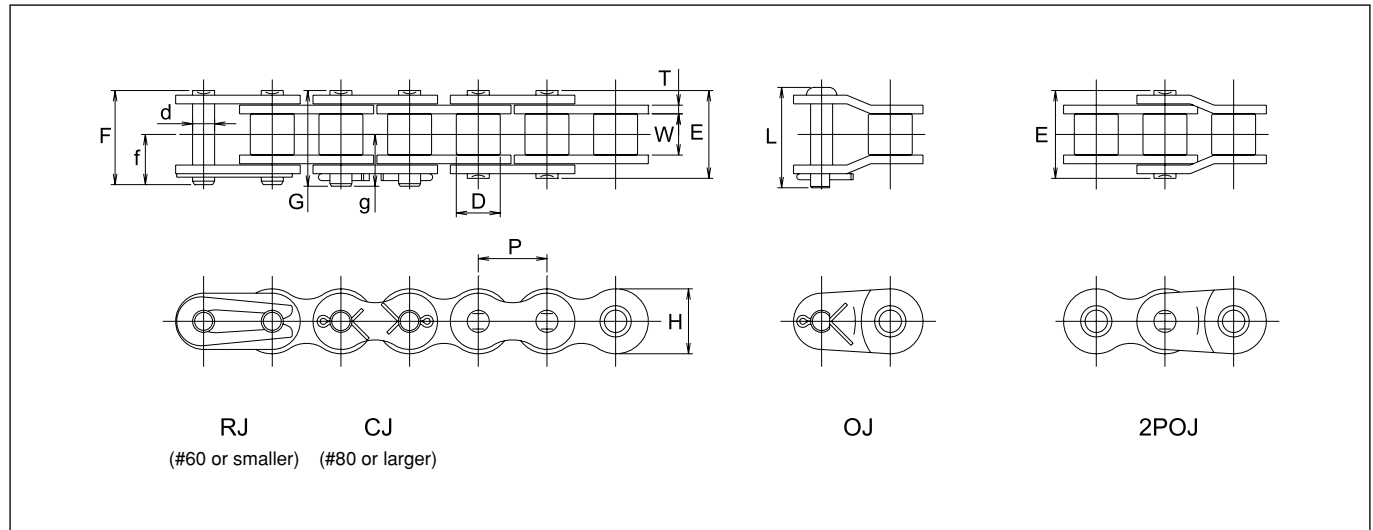
• Dimensions of attachment

Chain No.		Pitch P	A1, K1			SA, SK		Common dimensions		D		Approx. additional weight per attachment (kg)		
Standard	Nickel plated		C	Y	S	C₁	Y₁	B	O	I	L	A,SA	K,SK	D
DID C40 UR	DID C40 URN	12.70	12.70	17.6	7.92	12.70	17.50	9.53	3.5	9.52	16.8	0.002	0.004	0.001
DID C50 UR	DID C50 URN	15.875	15.88	23.0	10.31	15.88	22.60	12.70	5.2	11.91	21.0	0.003	0.006	0.002
DID C60 UR	DID C60 URN	19.05	19.05	27.0	11.91	18.26	26.20	15.88	5.2	14.27	25.7	0.006	0.012	0.003
DID C80 UR	DID C80 URN	25.40	25.40	34.9	15.88	24.61	34.05	19.05	6.8	19.05	33.9	0.011	0.022	0.007

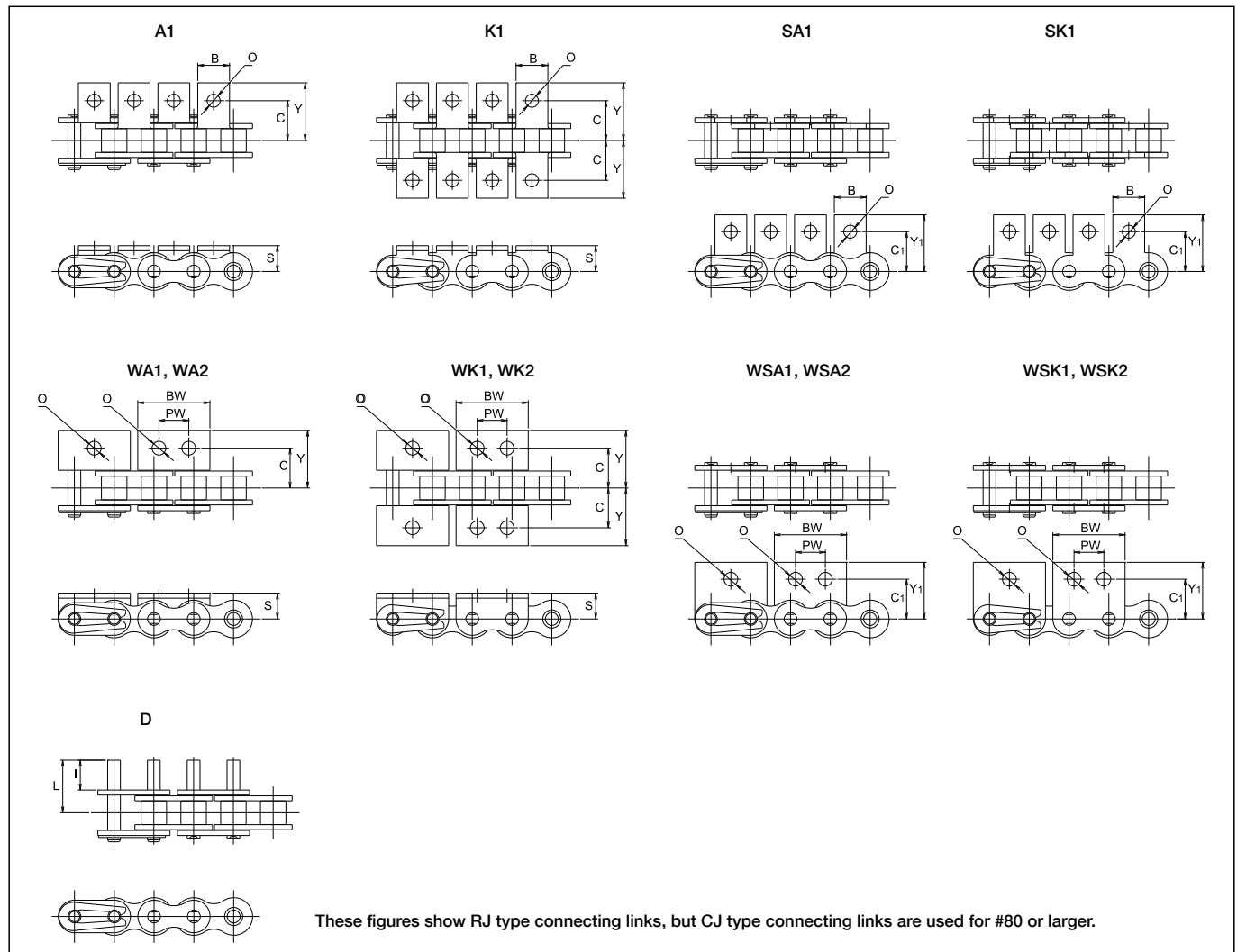
Note: 1. The values of the Avg. tensile strength and Max. allowable load are for chain bodies (attachments aren't included).

2. The alphabet C following DID indicates that the chain is for a conveyor system, and the thickness of the inner plate is the same as the outer plate. (The thickness of the inner plate of the Bushing Roller Chain for Transmission is thicker.)

Chain



Attachment



Small Conveyor Chains

Single Pitch



Dimensions of Nickel plated Chain (Single pitch)

• Dimensions of Chain

Chain No.	Pitch P	Roller link width W	Roller (bush) dia. D	Pin								Plate		Avg. tensile strength		Max. allowable load		Approx. weight without attachments (kg/m)
				d	E	F	G	L	f	g	T	H	kN	kgf	kN	kgf		
				Unit (mm)														
* DID 25N	6.35	3.18	(3.30)	2.31	7.8	8.5	—	—	4.7	—	0.72	5.9	4.02	410	0.63	65	0.13	
* DID 35N	9.525	4.78	(5.08)	3.59	12.0	13.1	—	—	7.3	—	1.25	9.0	9.31	950	1.47	150	0.32	
DID 41N	12.70	6.38	7.77	3.59	13.7	14.6	—	15.5	7.9	—	1.20	9.6	10.1	1,030	1.67	170	0.39	
DID 40N	12.70	7.95	7.92	3.97	16.5	17.6	18.1	19.1	9.5	10.1	1.50	12.0	16.6	1,700	2.64	270	0.63	
DID 50N	15.875	9.53	10.16	5.09	20.3	21.9	22.1	23.2	11.6	12.1	2.00	15.0	27.9	2,850	4.41	450	1.06	
DID 60N	19.05	12.7	11.91	5.96	25.4	26.9	27.9	29.8	14.3	15.1	2.40	18.1	40.2	4,100	6.37	650	1.44	
DID 80N	25.40	15.88	15.88	7.94	32.6	—	35.4	37.1	—	19.0	3.20	24.0	78.4	8,000	10.7	1,100	2.55	
DID100N	31.75	19.05	19.05	9.54	39.5	—	42.5	45.2	—	22.7	4.00	29.9	118	12,100	17.1	1,750	3.79	
DID120N	38.10	25.4	22.23	11.11	49.7	—	53.0	54.0	—	28.2	4.80	35.9	166	17,000	24.5	2,500	5.49	
DID140N	44.45	25.4	25.4	12.71	53.6	—	58.4	59.6	—	31.6	5.60	41.9	215	22,000	32.3	3,300	7.11	
DID160N	50.80	31.75	28.58	14.29	63.6	—	68.2	69.7	—	36.5	6.40	47.8	269	27,500	41.2	4,200	9.82	

Small Conveyor Chains

• Dimensions of attachment

Chain No.	Pitch P	A1, K1			SA1, SK1		Common dimensions		Attachment D		Approx. additional weight per attachment (kg)		
		C	Y	S	C₁	Y₁	B	O	I	L	A,SA	K,SK	D
* DID 25N	6.35	7.15	10.7	4.76	7.94	11.50	5.56	3.4	6.00	9.2	0.0003	0.0006	0.00002
* DID 35N	9.525	9.52	14.4	6.35	9.52	14.70	7.94	3.5	9.52	14.6	0.001	0.002	0.0009
DID 41N	12.70	11.91	17.5	7.14	12.30	17.50	9.53	3.5	9.52	15.4	0.0015	0.003	0.0009
DID 40N	12.70	12.70	17.6	7.92	12.70	17.50	9.53	3.5	9.52	16.8	0.002	0.004	0.001
DID 50N	15.875	15.88	23.0	10.31	15.88	22.60	12.70	5.2	11.91	21.0	0.003	0.006	0.002
DID 60N	19.05	19.05	27.0	11.91	18.26	26.20	15.88	5.2	14.27	25.7	0.006	0.012	0.003
DID 80N	25.40	25.40	34.9	15.88	24.61	34.05	19.05	6.8	19.05	33.9	0.011	0.022	0.007
DID100N	31.75	31.75	43.3	19.84	31.75	42.75	25.40	8.7	23.83	41.9	0.024	0.048	0.012
DID120N	38.10	38.10	53.2	23.02	36.51	50.30	28.58	10.3	28.58	51.4	0.037	0.074	0.02
DID140N	44.45	44.45	61.9	28.58	44.45	62.40	34.92	12.3	33.32	57.8	0.068	0.136	0.03
DID160N	50.80	50.80	69.9	31.75	50.80	68.10	38.10	14.3	38.10	67.4	0.091	0.182	0.045

Single Pitch

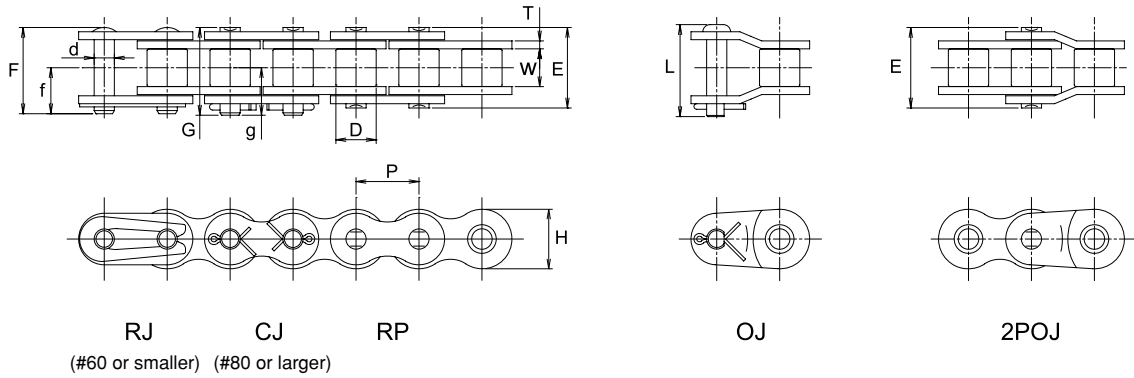
• Dimensions of wide attachment

Chain No.	Pitch P	WA1, WA2, WK1, WK2			WSA1, WSA2, WSK1, WSK2		Common dimensions			Approx. additional weight per attachment (kg)	
		C	Y	S	C₁	Y₁	O	Bw	Pw	WA,WSA	WK,WSK
DID 40N	12.70	12.70	17.6	7.92	12.70	17.5	4.5	23.0	9.5	0.003	0.006
DID 50N	15.875	15.88	23.0	10.31	15.88	22.6	5.5	28.8	11.9	0.007	0.014
DID 60N	19.05	19.05	27.0	11.91	18.26	26.2	6.6	34.6	14.3	0.012	0.024
DID 80N	25.40	25.40	34.9	15.88	24.61	34.1	9.0	46.1	19.1	0.026	0.052
DID100N	31.75	31.75	43.3	19.84	31.75	42.8	11.0	57.8	23.8	0.051	0.102

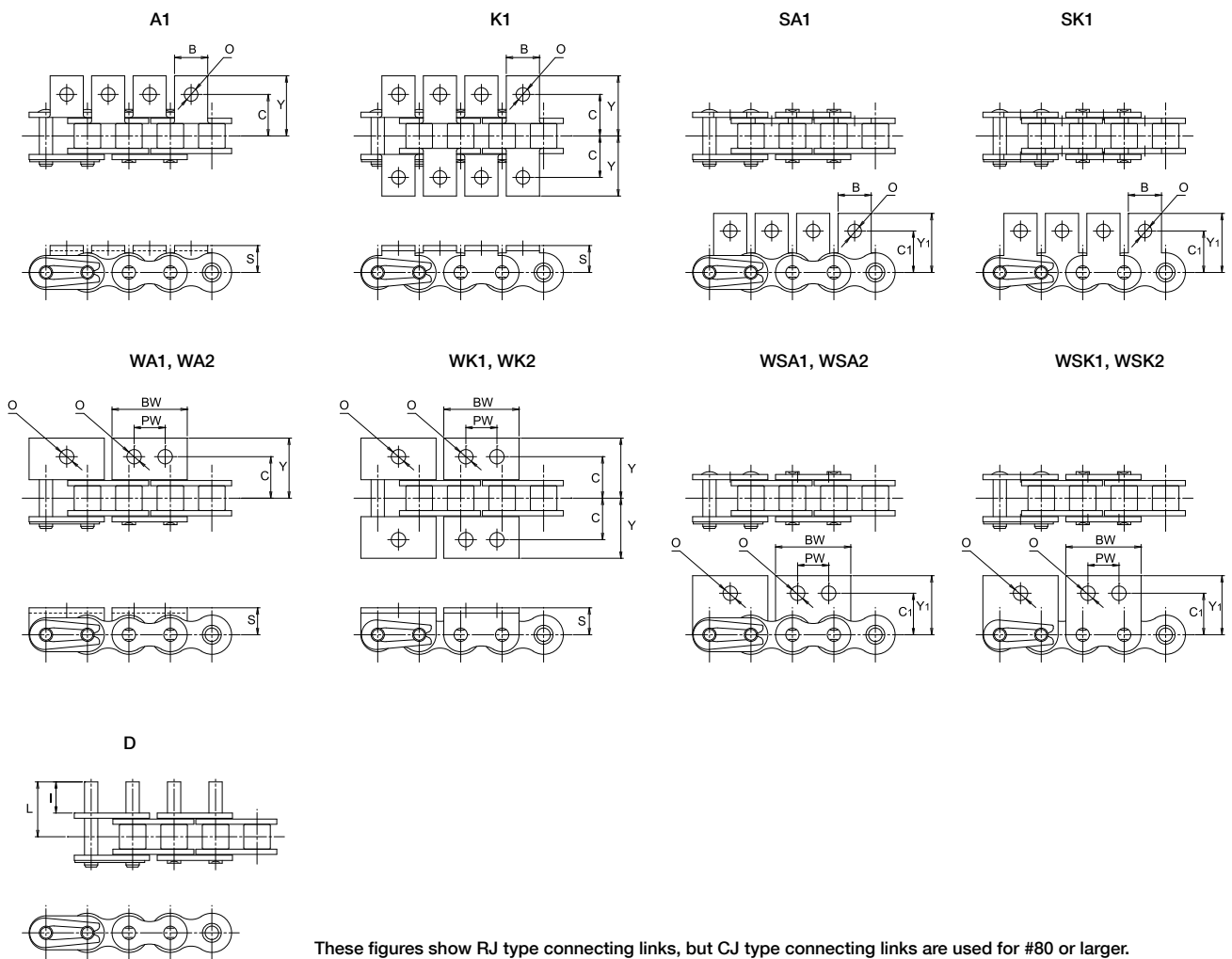
Note: 1. Those marked with * indicate Bushing Chain.

2. The values of the Avg. tensile strength and Max. allowable load are for chain bodies (attachments aren't included).

Chain



Attachment



Small Conveyor Chains

Single Pitch



Dimensions of High Guard Chain (Single pitch)

• Dimensions of Chain

Chain No.	Pitch P	Roller link width W	Roller (bush) dia. D	Pin								Plate		Avg. tensile strength		Max. allowable load		Approx. weight without attachments (kg/m)
				d	E	F	G	L	f	g	T	H	kN	kgf	kN	kgf		
				Unit (mm)														
* DID 35E	9.525	4.78	(5.08)	3.59	12.0	13.1	—	—	7.3	—	1.25	9.0	9.31	950	1.47	150	0.32	
DID 40E	12.70	7.95	7.92	3.97	16.5	17.6	18.1	19.1	9.5	10.1	1.5	12.0	10.1	1,030	1.67	170	0.63	
DID 50E	15.875	9.53	10.16	5.09	20.3	21.9	22.1	23.2	11.6	12.1	2.0	15.0	27.9	2,850	4.41	450	1.06	
DID 60E	19.05	12.70	11.91	5.96	25.4	26.9	27.9	29.8	14.3	15.1	2.4	18.1	40.2	4,100	6.37	650	1.44	
DID 80E	25.40	15.88	15.88	7.94	32.6	—	35.4	37.1	—	19.0	3.2	24.0	78.4	8,000	10.7	1,100	2.55	
DID100E	31.75	19.05	19.05	9.54	39.5	—	42.5	45.2	—	22.7	4.0	29.9	118	12,100	17.1	1,750	3.79	
DID120E	38.10	25.40	22.23	11.11	49.7	—	53.0	54.0	—	28.2	4.8	35.9	166	17,000	24.5	2,500	5.49	

• Dimensions of attachment

Chain No.	Pitch P	A1, K1			SA1, SK1		Common dimensions		D		Approx. additional weight per attachment (kg)		
		C	Y	S	C₁	Y₁	B	O	I	L	A,SA	K,SK	D
* DID 35E	9.525	9.52	14.4	6.35	9.52	14.70	7.94	3.5	9.52	14.6	0.001	0.002	0.0009
DID 40E	12.70	12.70	17.6	7.92	12.70	17.50	9.53	3.5	9.52	16.8	0.002	0.004	0.001
DID 50E	15.875	15.88	23.0	10.31	15.88	22.60	12.70	5.2	11.91	21.0	0.003	0.006	0.002
DID 60E	19.05	19.05	27.0	11.91	18.26	26.20	15.88	5.2	14.27	25.7	0.006	0.012	0.003
DID 80E	25.40	25.40	34.9	15.88	24.61	34.05	19.05	6.8	19.05	33.9	0.011	0.022	0.007
DID100E	31.75	31.75	43.3	19.84	31.75	42.75	25.40	8.7	23.83	41.9	0.024	0.048	0.012
DID120E	38.10	38.10	53.2	23.02	36.51	50.30	28.58	10.3	28.58	51.4	0.037	0.074	0.02

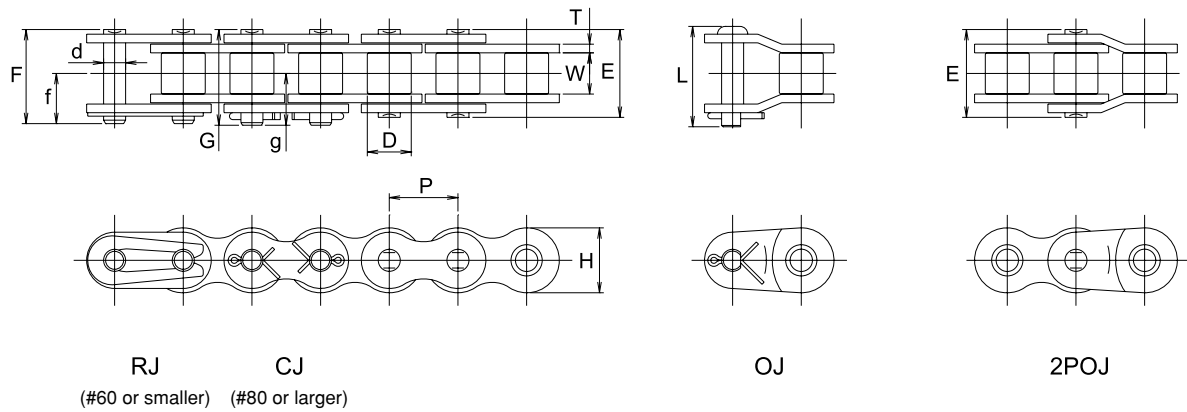
• Dimensions of wide attachment

Chain No.	Pitch P	WA1, WA2, WK1, WK2			WSA1, WSA2, WSK1, WSK2		Common dimensions			Approx. additional weight per attachment (kg)	
		C	Y	S	C₁	Y₁	O	Bw	Pw	WA,WSA	WK,WSK
DID 40E	12.70	12.70	17.6	7.92	12.70	17.5	4.5	23.0	9.5	0.003	0.006
DID 50E	15.875	15.88	23.0	10.31	15.88	22.6	5.5	28.8	11.9	0.007	0.014
DID 60E	19.05	19.05	27.0	11.91	18.26	26.2	6.6	34.6	14.3	0.012	0.024
DID 80E	25.40	25.40	34.9	15.88	24.61	34.1	9.0	46.1	19.1	0.026	0.052

Note: 1. Those marked with * indicate Bushing Chain.

2. The values of the Avg. tensile strength and Max. allowable load are for chain bodies (attachments aren't included).

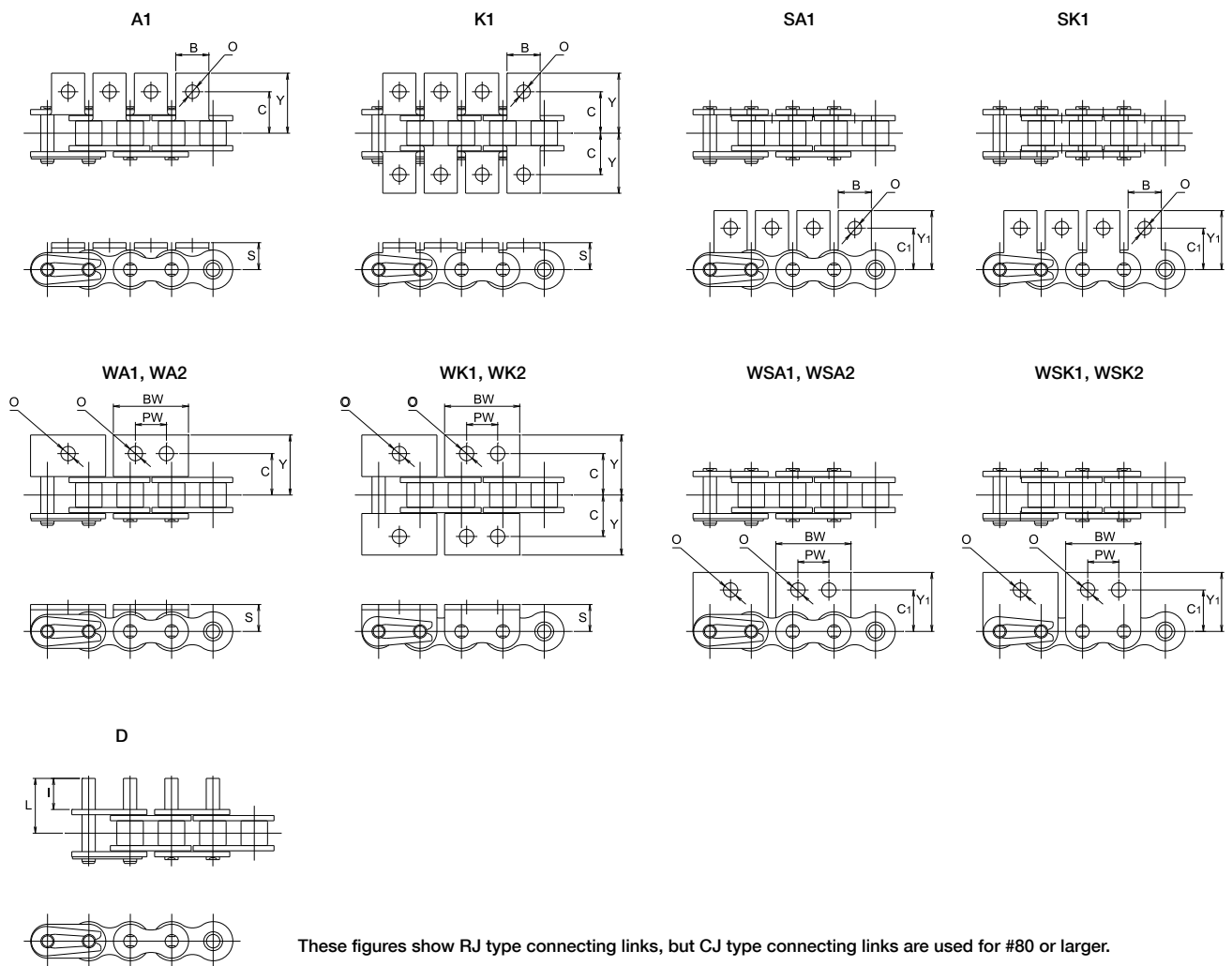
Chain



Small Conveyor Chains

Single Pitch

Attachment





Dimensions for Double Guard Chain (Single Pitch)

• Dimensions of Chain

Chain No.	Pitch P	Roller link width W	Roller (bush) dia. D	Pin								Plate		Avg. tensile strength		Max. allowable load		Approx. weight without attachments (kg/m)
				d	E	F	G	L	f	g	T	H	kN	kgf	kN	kgf		
				Unit (mm)														
DID 40WG	12.70	7.95	7.92	3.97	16.5	17.6	—	19.1	9.5	—	1.5	12.0	16.6	1,700	2.64	270	0.63	
DID 50WG	15.875	9.53	10.16	5.09	20.3	21.9	—	23.2	11.6	—	2.0	15.0	27.9	2,850	4.41	450	1.06	
DID 60WG	19.05	12.70	11.91	5.96	25.4	26.9	27.9	29.8	14.3	15.1	2.4	18.1	40.2	4,100	6.37	650	1.44	
DID 80WG	25.40	15.88	15.88	7.94	32.6	—	35.4	37.1	—	19.0	3.2	24.0	78.4	8,000	10.7	1,100	2.55	

• Dimensions of attachment

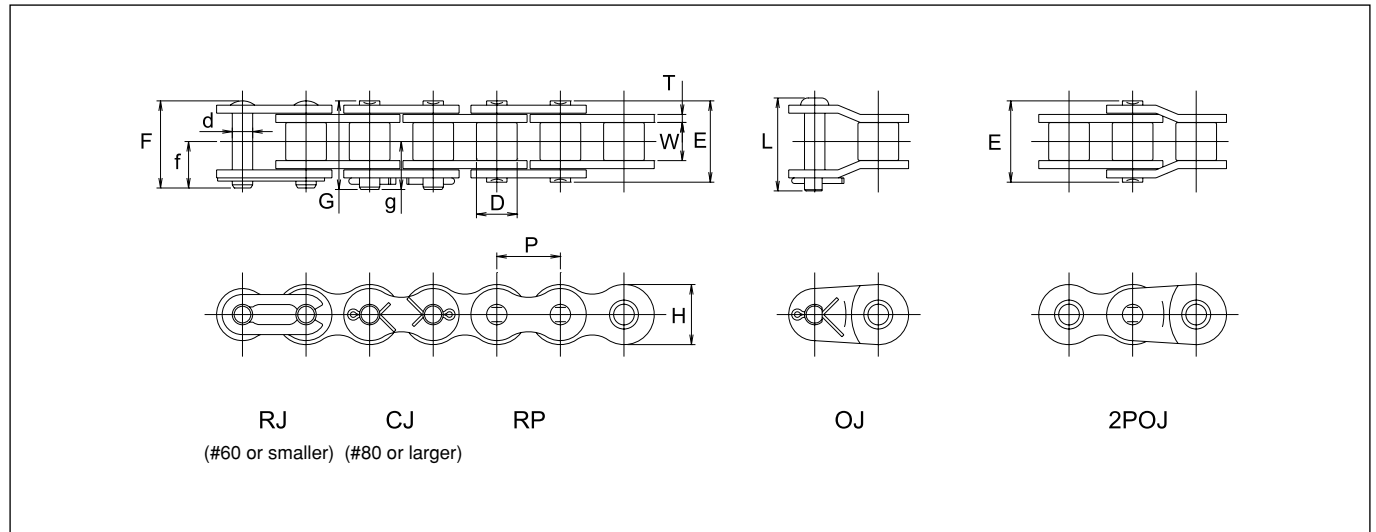
Chain No.	Pitch P	A1, K1			SA1, SK1		Common dimensions		Attachment D		Approx. additional weight per attachment (kg)		
		C	Y	S	C₁	Y₁	B	O	I	L	A,SA	K,SK	D
DID 40WG	12.70	12.70	17.6	7.92	12.70	17.50	9.53	3.5	9.52	16.8	0.002	0.004	0.001
DID 50WG	15.875	15.88	23.0	10.31	15.88	22.60	12.70	5.2	11.91	21.0	0.003	0.006	0.002
DID 60WG	19.05	19.05	27.0	11.91	18.26	26.20	15.88	5.2	14.27	25.7	0.006	0.012	0.003
DID 80WG	25.40	25.40	34.9	15.88	24.61	34.05	19.05	6.8	19.05	33.9	0.011	0.022	0.007

• Dimensions of wide attachment

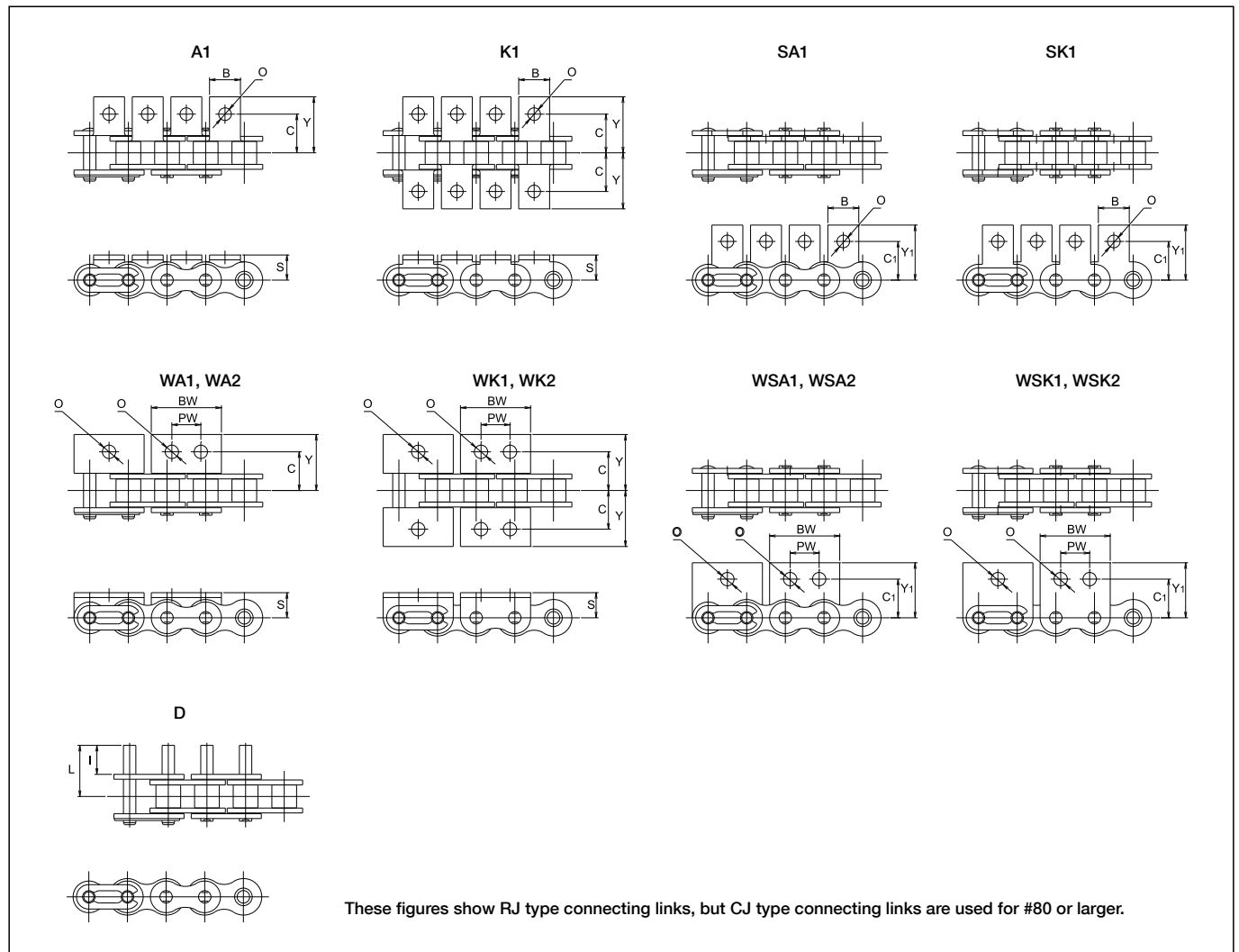
Chain No.	Pitch P	WA1, WA2, WK1, WK2			WSA1, WSA2, WSK1, WSK2		Common dimensions			Approx. additional weight per attachment (kg)	
		C	Y	S	C₁	Y₁	O	Bw	Pw	WA,WSA	WK,WSK
DID 40WG	12.70	12.70	17.6	7.92	12.70	17.5	4.5	23.0	9.5	0.003	0.006
DID 50WG	15.875	15.88	23.0	10.31	15.88	22.6	5.5	28.8	11.9	0.007	0.014
DID 60WG	19.05	19.05	27.0	11.91	18.26	26.2	6.6	34.6	14.3	0.012	0.024
DID 80WG	25.40	25.40	34.9	15.88	24.61	34.1	9.0	46.1	19.1	0.026	0.052

Note: The values of the Avg. tensile strength and Max. allowable load are for chain bodies (attachments aren't included).

Chain



Attachment



Small Conveyor Chains

Single Pitch



Dimensions of Stainless Steel Chain (Single pitch)

• Dimensions of Chain

Unit (mm)

Chain No.	Pitch P	Roller link width W	Roller (bush) dia. D	Pin						Plate			Avg. tensile strength		Max. allowable load		Approx. weight (kg/m)	
				d	E	F	G	f	L	g	T	H	h	kN	kgf	kN		kgf
* DID 25SS	6.35	3.18	(3.30)	2.31	7.65	8.65	-	4.83	-	-	0.75	5.8	5.0	3.33	340	0.12	12	0.14
* DID 35SS	9.525	4.78	(5.08)	3.59	11.55	12.90	-	7.13	13.85	-	1.25	8.8	7.3	7.55	770	0.26	26	0.33
DID 40SS	12.70	7.95	7.92	3.97	16.15	17.65	-	9.58	19.05	-	1.50	11.7	10.1	13.3	1,350	0.44	45	0.63
DID 50SS	15.875	9.53	10.16	5.08	20.40	21.80	-	11.60	23.05	-	2.00	14.6	12.6	20.9	2,120	0.69	70	1.04
DID 60SS	19.05	12.70	11.91	5.96	25.40	26.90	-	14.20	29.55	-	2.40	17.5	15.0	30.0	3,050	1.03	105	1.50
DID 80SS	25.40	15.88	15.88	7.94	32.30	-	35.40	-	37.10	19.25	3.20	23.0	19.7	53.4	5,420	1.77	180	2.62
DID100SS	31.75	19.05	19.05	9.54	40.40	-	43.35	-	43.75	23.15	4.00	28.9	24.8	82.3	8,360	2.55	259	4.09

• Dimensions of Chain

Chain No.	Pitch P	Roller link width W	Roller (bush) dia. D	Pin						Plate			Avg. tensile strength		Max. allowable load		Approx. weight (kg/m)	
				d	E	F	G	f	L	g	T	H	h	kN	kgf	kN		kgf
DID 40 SSK	12.70	7.95	7.92	3.97	16.15	17.65	-	9.58	19.05	-	1.50	11.7	10.1	13.3	1,350	0.69	70	0.63
DID 50 SSK	15.875	9.53	10.16	5.09	20.40	21.80	-	11.60	23.05	-	2.00	14.6	12.6	20.9	2,120	1.03	100	1.04
DID 60 SSK	19.05	12.70	11.91	5.96	25.40	26.90	-	14.20	29.55	-	2.40	17.5	15.0	30.0	3,050	1.57	160	1.50
DID 80 SSK	25.40	15.88	15.88	7.94	32.30	-	35.40	-	37.10	19.25	3.20	23.0	19.7	53.4	5,420	2.65	270	2.62

• Dimensions of attachment

Chain No.	A1, K1			SA1, SK1		Common dimensions		D		Approx. additional weight per attachment (kg)		
	C	Y	S	C₁	Y₁	B	O	I	L	A,SA	K,SK	D
* DID 25SS	7.1	10.7	4.8	7.95	11.9	5.6	2.8	6.00	13.90	0.0003	0.0006	0.0002
* DID 35SS	9.5	13.8	6.4	9.50	14.25	7.9	2.8	9.52	21.60	0.0009	0.0018	0.0007
DID 40SS.SSK	12.7	17.4	7.9	12.70	17.3	9.5	3.6	9.52	25.80	0.0014	0.0028	0.0009
DID 50SS.SSK	15.9	22.3	10.3	15.90	22.3	12.7	5.2	11.91	32.30	0.0032	0.0064	0.0017
DID 60SS.SSK	19.1	27.2	11.9	18.30	26.3	15.9	5.2	14.27	40.00	0.0056	0.012	0.0034
DID 80SS.SSK	25.4	35.2	15.9	24.60	34.2	19.1	6.8	19.05	52.35	0.013	0.026	0.007
DID 100SS	31.8	44.7	19.8	31.8	44.1	25.4	8.7	-	-	0.025	0.050	-

• Dimensions of wide attachment

Chain No.	WA1, WA2, WK1, WK2			WSA1, WSA2, WSK1, WSK2		Common dimensions			Approx. additional weight per attachment (kg)	
	C	Y	S	C₁	Y₁	O	Bw	Pw	WA,WSA	WK,WSK
DID 40SS.SSK	12.7	17.4	7.9	12.70	17.3	3.6	23.0	12.70	0.003	0.006
DID 50SS.SSK	15.9	23.0	10.3	15.90	22.6	5.2	28.8	15.88	0.007	0.014
DID 60SS.SSK	19.05	28.2	11.9	18.30	26.7	5.2	34.6	19.05	0.013	0.026
DID 80SS.SSK	25.4	36.6	15.9	24.60	35.4	6.8	46.1	25.40	0.03	0.06
DID 100SS	31.75	44.9	19.8	31.80	44.0	8.3	57.7	31.75	0.06	0.12

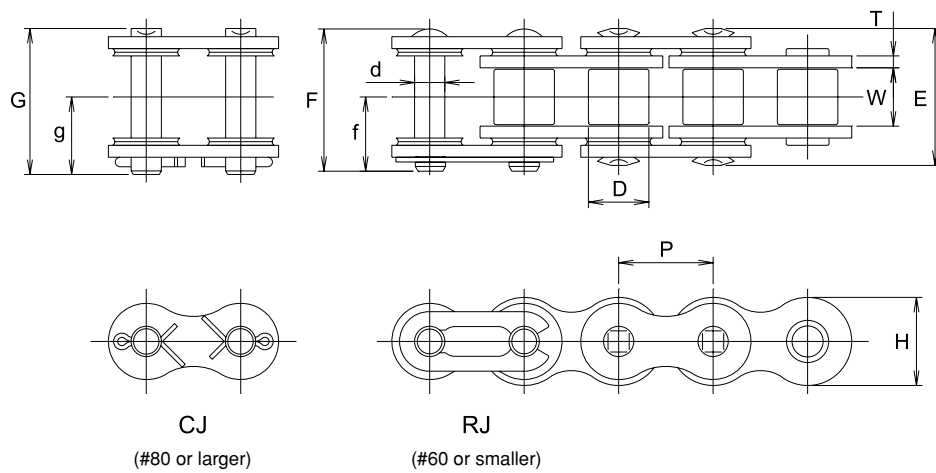
Note: 1. Those marked with * indicate Bushing Chain.

2. The values of the Avg. tensile strength and Max. allowable load are for chain bodies (attachments aren't included).

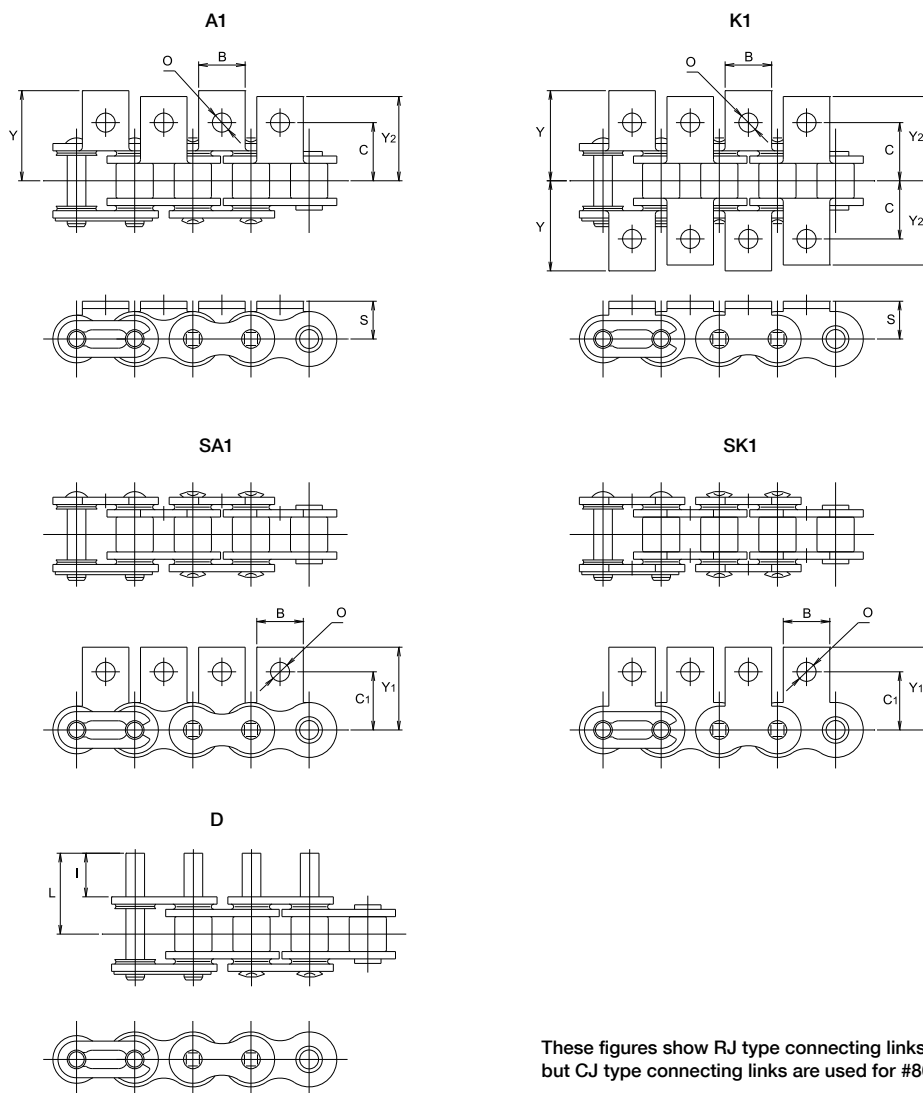
Small Conveyor Chains

Single Pitch

Chain



Attachment



These figures show RJ type connecting links, but CJ type connecting links are used for #80 or larger.



Dimensions of Stainless Steel X-Ring Chains (Single pitch)

• Dimensions of Chain

Unit (mm)

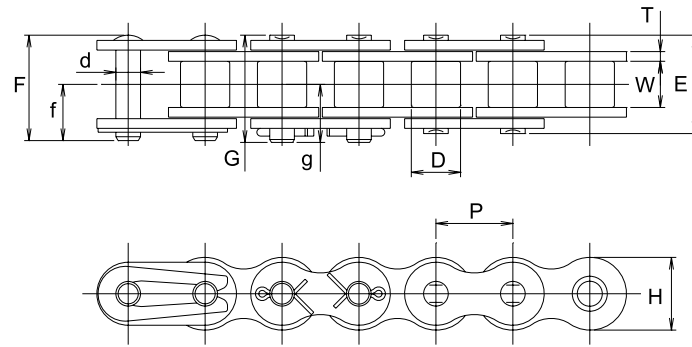
Chain No.	Pitch P	Roller link width W	Roller (bush) dia. D	Pin						Plate		Avg. tensile strength		Max. allowable load		Approx. weight kg/m
				d	E	F	G	f	g	T	H	kN	kgf	kN	kgf	
DID40SSLT	12.70	7.95	7.92	3.96	20.0	20.3	-	10.7	-	1.5	11.7	13.3	1,350	0.44	40	0.68
DID50SSLT	15.875	9.53	10.16	5.08	23.4	24.3	-	12.8	-	2.0	14.6	20.9	2,120	0.69	70	1.1
DID60SSLT	19.05	12.70	11.91	5.95	29.2	29.9	-	15.6	-	2.4	17.5	30.0	3,050	1.03	100	1.6
DID80SSLT	25.40	15.88	15.88	7.93	36.5	-	39.0	-	20.7	3.2	23.0	53.4	5,420	1.77	180	2.7

• Dimensions of attachment

Chain No.	Pitch P	A1, K1				SA1, SK1		Common dimensions		D		Approx. additional weight per attachment (kg)		
		C	Y	Y₂	S	C₁	Y₁	B	O	I	L	A,SA	K,SK	D
DID40SSLT	12.70	12.7	18.6	17.5	7.9	12.7	17.3	9.5	3.6	9.52	17.9	0.002	0.004	0.001
DID50SSLT	15.875	15.9	23.4	22.3	10.3	15.9	22.3	12.7	5.2	11.91	22.1	0.003	0.006	0.002
DID60SSLT	19.05	19.0	28.6	27.3	11.9	18.3	26.3	15.9	5.2	14.27	27.1	0.006	0.012	0.003
DID80SSLT	25.40	25.4	36.9	35.3	15.9	24.6	34.2	19.1	6.8	19.05	35.4	0.011	0.022	0.007

Note: The values of the Avg. tensile strength and Max. allowable load are for chain bodies (attachments aren't included).

Chain

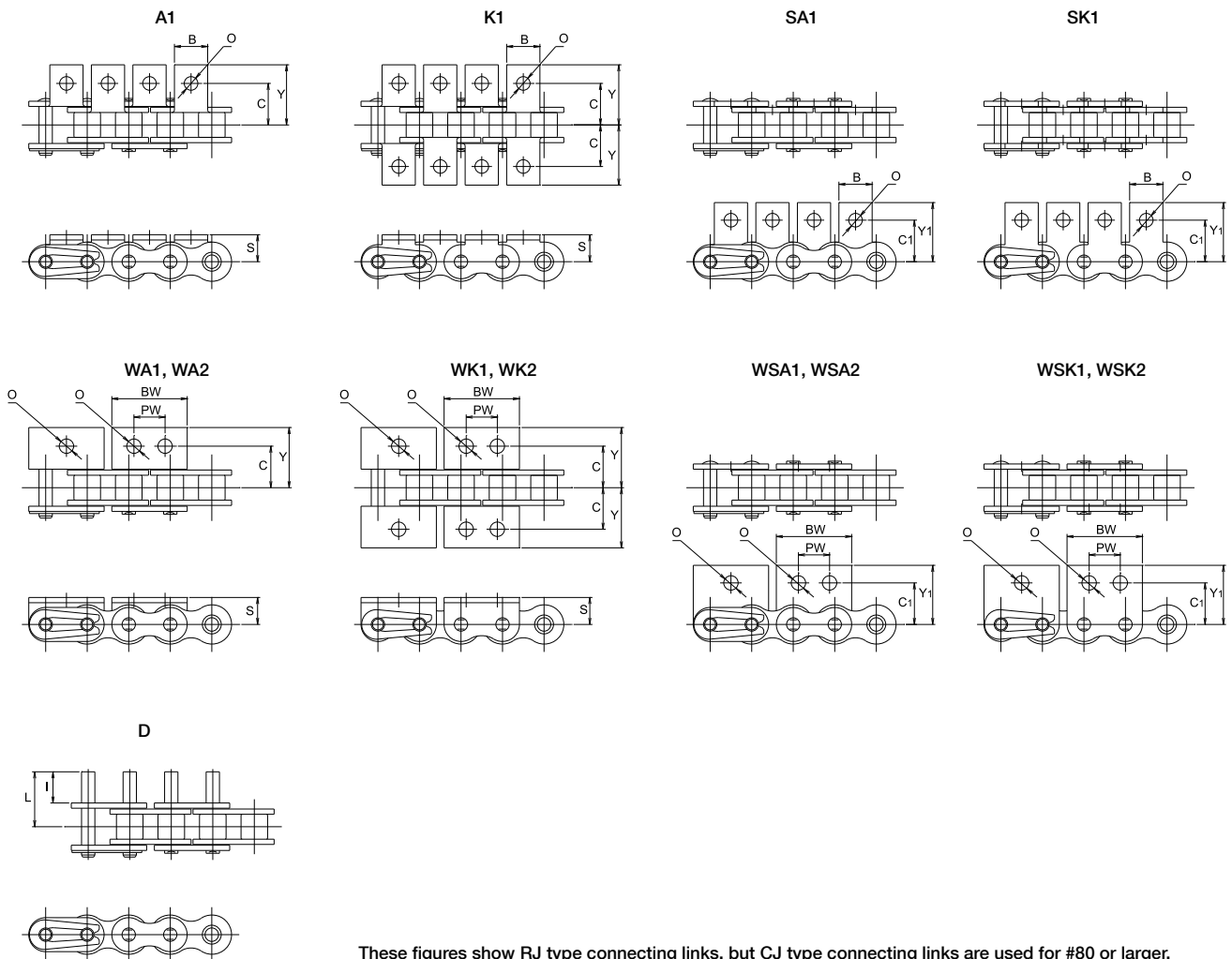


RJ (#60 or smaller) CJ (#80 or larger) RP

Small Conveyor Chains

Single Pitch

Attachment



These figures show RJ type connecting links, but CJ type connecting links are used for #80 or larger.



Dimensions of Low Temperature Resistant Chain (Single pitch)

• Dimensions of Chain

Unit (mm)

Chain No.	Pitch P	Roller link width W	Roller (bush) dia. D	Pin						Plate		Max. allowable load						Approx. weight without attachments (kg/m)
				d	E	F	G	f	g	T	H	+80°C~-10°C		-11°C~-30°C		-31°C~-40°C		
												kN	kgf	kN	kgf	kN	kgf	
DID 40TK	12.70	7.95	7.92	3.97	16.5	17.6	—	9.5	—	1.5	12.0	3.72	380	2.54	260	2.15	220	0.63
DID 50TK	15.875	9.53	10.16	5.09	20.3	21.9	—	11.6	—	2.0	15.0	6.86	700	4.80	490	3.92	400	1.06
DID 60TK	19.05	12.70	11.91	5.96	25.4	26.9	—	14.3	—	2.4	18.1	9.31	950	6.47	660	5.39	550	1.44
DID 80TK	25.40	15.88	15.88	7.94	32.6	—	35.5	—	19.0	3.2	24.0	14.7	1,490	10.3	1,050	8.53	870	2.55
DID100TK	31.75	19.05	19.05	9.54	39.5	—	42.6	—	22.7	4.0	29.9	22.6	2,290	15.8	1,600	13.0	1,320	3.79
DID120TK	38.10	25.40	22.23	11.11	49.7	—	53.8	—	28.9	4.8	35.9	30.4	3,090	21.3	2,160	17.6	1,790	5.49
DID140TK	44.45	25.40	25.40	12.71	53.6	—	58.4	—	31.7	5.6	41.9	40.2	4,080	28.1	2,850	23.2	2,360	7.11
DID160TK	50.80	31.75	28.58	14.29	63.6	—	63.6	—	36.5	6.4	47.8	53.0	5,380	37.1	3,770	30.7	3,120	9.82

• Dimensions of attachment

Chain No.	Pitch P	A1, K1			SA1, SK1		Common dimensions		D		Approx. additional weight per attachment (kg)		
		C	Y	S	C₁	Y₁	B	O	I	L	A,SA	K,SK	D
DID 40TK	12.70	12.70	17.6	7.92	12.70	17.50	9.53	3.5	9.52	16.8	0.002	0.004	0.001
DID 50TK	15.875	15.88	23.0	10.31	15.88	22.60	12.70	5.2	11.91	21.0	0.003	0.006	0.002
DID 60TK	19.05	19.05	27.0	11.91	18.26	26.20	15.88	5.2	14.27	25.7	0.006	0.012	0.003
DID 80TK	25.40	25.40	34.9	15.88	24.61	34.05	19.05	6.8	19.05	33.9	0.011	0.022	0.007
DID100TK	31.75	31.75	43.3	19.84	31.75	42.75	25.40	8.7	23.83	41.9	0.024	0.048	0.012
DID120TK	38.10	38.10	53.2	23.02	36.51	50.30	28.58	10.3	28.58	51.4	0.037	0.074	0.020
DID140TK	44.45	44.45	61.9	28.58	44.45	62.40	34.92	12.3	33.32	57.8	0.068	0.136	0.030
DID160TK	50.80	50.80	69.9	31.75	50.80	68.10	38.10	14.3	38.10	67.4	0.091	0.182	0.045

• Dimensions of wide attachment

Chain No.	Pitch P	WA1, WA2, WK1, WK2			WSA1, WSA2, WSK1, WSK2		Common dimensions			Approx. additional weight per attachment (kg)	
		C	Y	S	C₁	Y₁	O	Bw	Pw	WA,WSA	WK,WSK
DID 40TK	12.70	12.70	17.6	7.92	12.70	17.5	4.5	23.0	9.5	0.003	0.006
DID 50TK	15.875	15.88	23.0	10.31	15.88	22.6	5.5	28.8	11.9	0.007	0.014
DID 60TK	19.05	19.05	27.0	11.91	18.26	26.2	6.6	34.6	14.3	0.012	0.024
DID 80TK	25.40	25.40	34.9	15.88	24.61	34.1	9.0	46.1	19.1	0.026	0.052
DID100TK	31.75	31.75	43.3	19.84	31.75	42.8	11.0	57.8	23.8	0.051	0.102

Note: The values of the Avg. tensile strength and Max. allowable load are for chain bodies (attachments aren't included).