

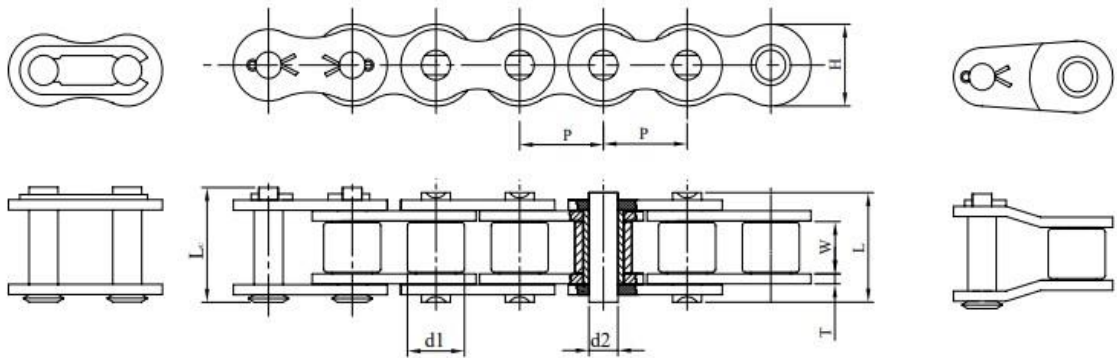


DXA ROLLER CHAIN



A Series Standard Roller Chain

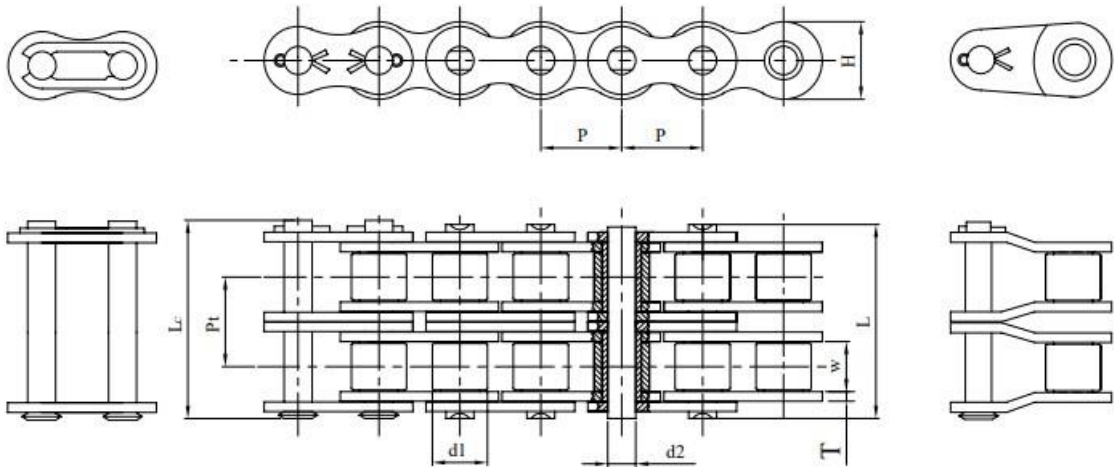
Single Strand roller & bushing chain



ISO Chain No	ANSI Chain No	DXA Chain No	Pitch	Roller link width	Roller Outer Diameter	Pin outer Diameter	Pin length		Link Plate Height	Link Plate Thickness	Tensile Strength				Allowed load	
			P	W min	d1 max	d2 max	L max	Lc max	H max	T	min		AVE		max	
			mm	mm	mm	mm	mm	mm	mm	mm	kgf	kN	kgf	kN	kgf	kN
04C	25	25	6.35	3.1	3.3	2.31	8	8.8	6.02	0.75	360	3.53	400	3.92	65	0.63
		25H	6.35	3.1	3.3	2.31	9	10	5.9	1.0	550	5.39	650	6.37	100	0.98
06C	35	35	9.525	4.68	5.08	3.6	12.15	13.4	9.05	1.15	810	7.94	1100	10.79	220	2.15
83		415E	12.7	4.88	7.77	3.97	12.9	13.45	10.3	1.1/1.4	1185	11.62	1390	13.63	380	3.72
84		415H	12.7	4.68	7.77	3.97	13.3	15	12	1.5	1810	17.75	1900	18.63	380	3.72
85	41	41	12.7	6.25	7.77	3.6	14	16	9.91	1.2	680	6.67	1250	12.26	230	2.25
08A	40	40	12.7	7.85	7.92	3.98	17.8	21	12.07	1.5	1420	13.93	1950	19.12	370	3.62
10A	50	50	15.875	9.4	10.16	5.09	21.8	25	15.09	2.0	2230	21.87	3000	29.43	650	6.37
12A	60	60	19.05	12.57	11.91	5.96	26.9	31	18	2.35	4000	39.24	4100	40.22	920	9.02
16A	80	80	25.4	15.75	15.88	7.94	33.5	38	24.13	3.2	5680	55.72	7500	73.57	1500	14.71
20A	100	100	31.75	18.9	19.05	9.54	41.1	47	30.17	4.0	8880	87.11	12100	118.7	2300	22.56
24A	120	120	38.1	25.22	22.23	11.11	50.8	57	36.2	4.7	12770	125.27	16000	156.96	3100	30.41
28A	140	140	44.45	25.22	25.4	12.71	54.9	62	42.23	5.5	17380	170.49	21000	206.01	4100	40.22
32A	160	160	50.8	31.55	28.58	14.29	65.5	73	48.26	6.4	22800	223.66	30000	294.3	5400	52.97
40A	200	200	63.5	37.85	39.68	19.85	80.4	90	60.33	8.0	35460	347.86	46000	451.26	7300	71.61
48A	240	240	76.2	47.35	47.63	23.81	95.5	106	72.39	9.5	53110	521	67500	662.17	10100	99.08

A Series Standard Roller Chain

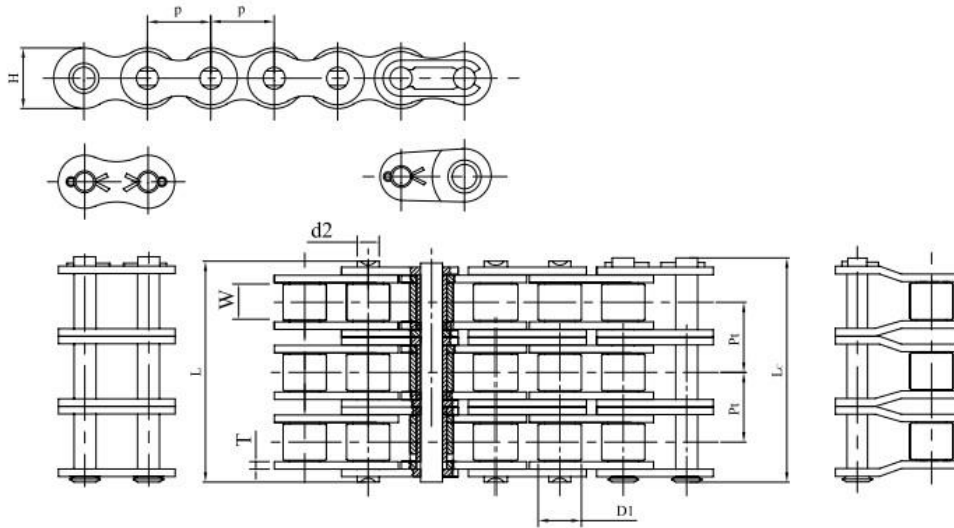
Double strand roller & bushing chain



ISO Chain No	ANSI Chain No	DXA Chain No	Pitch	Roller link width	Roller Outer Diameter	Pin outer Diameter	Pin length		Link Plate Height	Link Plate Thickness	Transverse Pitch of Strand	Tensile Strength				Allowed load	
			P	W min	d1 max	d2 max	L max	Lc max	H max	T	Pt	min		AVE		max	
			mm	mm	mm	mm	mm	mm	mm	mm	mm	kgf	kN	kgf	kN	kgf	kN
04C-2	25-2	25-2	6.35	3.1	3.3	2.31	14.5	15.2	6.02	0.75	6.4	720	7.06	860	8.43	110	1.07
06C-2	35-2	35-2	9.525	4.68	5.08	3.6	22.8	23.7	9.05	1.15	10.13	1620	15.89	2200	21.58	370	3.62
08A-2	40-2	40-2	12.7	7.85	7.92	3.98	32.3	36.2	12.07	1.5	14.38	2840	27.86	3900	38.25	630	6.18
10A-2	50-2	50-2	15.875	9.4	10.16	5.09	39.9	44	15.09	2	18.11	4450	43.65	6200	60.82	1100	10.79
12A-2	60-2	60-2	19.05	12.57	11.91	5.96	49.8	54.4	18	2.35	22.78	6400	62.78	8400	82.4	1530	15
16A-2	80-2	80-2	25.4	15.75	15.88	7.94	62.7	68.1	24.13	3.2	29.29	11360	111.44	15000	147.15	2550	25.01
20A-2	100-2	100-2	31.75	18.9	19.05	9.54	77	83.1	30.17	4	35.76	17760	174.22	24200	237.4	3900	38.25
24A-2	120-2	120-2	38.1	25.22	22.23	11.11	96.3	102.9	36.2	4.7	45.44	25540	250.54	32000	313.92	5250	51.5
28A-2	140-2	140-2	44.45	25.22	25.4	12.71	103.6	111	42.23	5.5	48.87	34760	340.99	42000	412.02	6970	68.37
32A-2	160-2	160-2	50.8	31.55	28.58	14.29	124.2	132.1	48.26	6.4	58.55	45600	447.33	60000	588.6	9150	89.76
40A-2	200-2	200-2	63.5	37.85	39.68	19.85	151.9	162.1	60.33	8	71.55	70920	695.72	92000	902.52	12400	121.64
48A-2	240-2	240-2	76.2	47.35	47.63	23.81	183.4	193.9	72.39	9.5	87.83	106220	1042.01	135000	1324.35	17150	168.24

A Series Standard Roller Chain

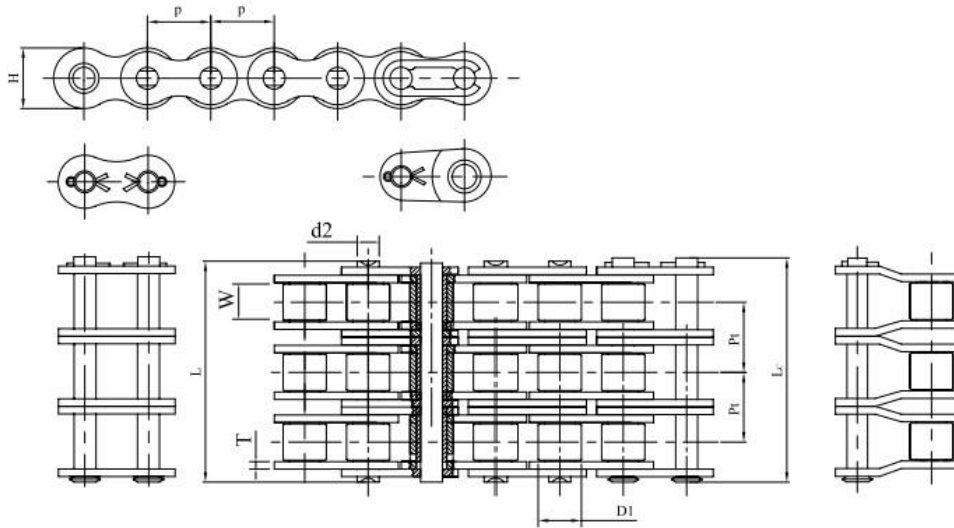
Three strand roller & bushing chain



ISO Chain No	ANSI Chain No	DXA Chain No	Pitch	Roller link width	Roller Outer Diameter	Pin outer Diameter	Pin length		Link Plate Height	Link Plate Thickness	Transverse Pitch of Strand	Tensile Strength			
							L max	Lc max				min		AVE	
							mm	mm				mm	mm	kgf	kN
04C-3	25-3	25-3	6.35	3.1	3.3	2.31	21.8	23.8	6.02	0.75	6.4	1075	10.54	1397	13.7
06C-3	35-3	35-3	9.525	4.68	5.08	3.6	33.5	36.5	9.05	1.15	10.13	2420	23.74	3146	30.86
08A-3	40-3	40-3	12.7	7.85	7.92	3.98	46.7	49.7	12.07	1.5	14.38	4250	41.69	5525	54.2
10A-3	50-3	50-3	15.875	9.4	10.16	5.09	57.9	60.9	15.09	2.0	18.11	6675	65.48	8677	85.12
12A-3	60-3	60-3	19.05	12.57	11.91	5.96	72.6	76.6	18.00	2.35	22.78	9535	93.53	12395	121.59
16A-3	80-3	80-3	25.4	15.75	15.88	7.94	91.09	96	24.13	3.2	29.29	17050	167.26	22165	217.43
20A-3	100-3	100-3	31.75	18.9	19.05	9.54	113	118	30.17	4.0	35.76	26560	260.55	34528	338.71
24A-3	120-3	120-3	38.1	25.22	22.23	11.11	141.7	147.7	36.2	4.7	45.44	38200	374.74	49660	487.16
28A-3	140-3	140-3	44.45	25.22	25.4	12.71	152.4	158.5	42.23	5.5	48.87	51750	507.66	67275	659.96
32A-3	160-3	160-3	50.8	31.55	28.58	14.29	182.9	189	48.26	6.4	58.55	68100	668.06	88530	868.47
40A-3	200-3	200-3	63.5	37.85	39.68	19.85	206	214	60.33	8.0	71.55	106500	1044.76	138450	1358.19
48A-3	240-3	240-3	76.2	47.35	47.63	23.81	227.2	235.5	72.39	9.5	87.83	153200	1502.89	199160	1953.75

A Series Standard Roller Chain

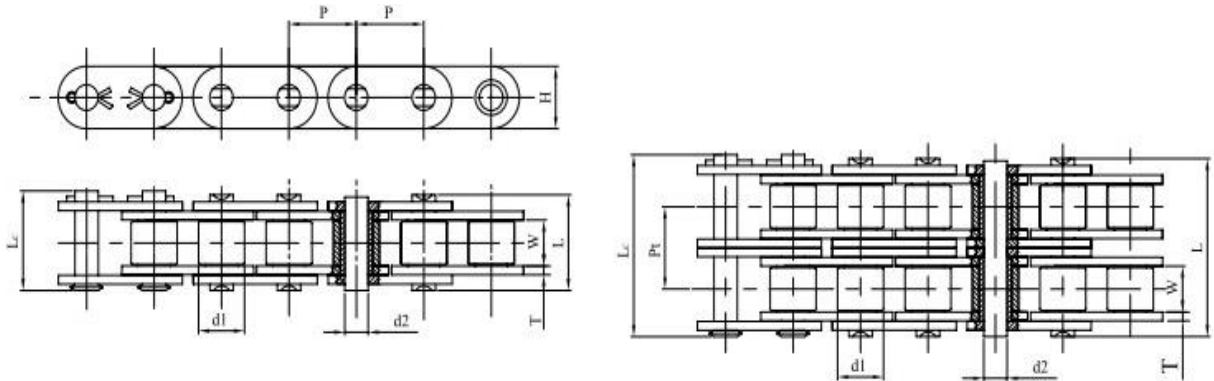
Three strand roller & bushing chain



ISO Chain No	ANSI Chain No	DXA Chain No	Pitch	Roller link width	Roller Outer Diameter	Pin outer Diameter	Pin length		Link Plate Height	Link Plate Thickness	Transverse Pitch of Strand	Tensile Strength			
							L max	Lc max				min		AVE	
							mm	mm				mm	mm	kgf	kN
04C-3	25-3	25-3	6.35	3.1	3.3	2.31	21.8	23.8	6.02	0.75	6.4	1075	10.54	1397	13.7
06C-3	35-3	35-3	9.525	4.68	5.08	3.6	33.5	36.5	9.05	1.15	10.13	2420	23.74	3146	30.86
08A-3	40-3	40-3	12.7	7.85	7.92	3.98	46.7	49.7	12.07	1.5	14.38	4250	41.69	5525	54.2
10A-3	50-3	50-3	15.875	9.4	10.16	5.09	57.9	60.9	15.09	2.0	18.11	6675	65.48	8677	85.12
12A-3	60-3	60-3	19.05	12.57	11.91	5.96	72.6	76.6	18.00	2.35	22.78	9535	93.53	12395	121.59
16A-3	80-3	80-3	25.4	15.75	15.88	7.94	91.09	96	24.13	3.2	29.29	17050	167.26	22165	217.43
20A-3	100-3	100-3	31.75	18.9	19.05	9.54	113	118	30.17	4.0	35.76	26560	260.55	34528	338.71
24A-3	120-3	120-3	38.1	25.22	22.23	11.11	141.7	147.7	36.2	4.7	45.44	38200	374.74	49660	487.16
28A-3	140-3	140-3	44.45	25.22	25.4	12.71	152.4	158.5	42.23	5.5	48.87	51750	507.66	67275	659.96
32A-3	160-3	160-3	50.8	31.55	28.58	14.29	182.9	189	48.26	6.4	58.55	68100	668.06	88530	868.47
40A-3	200-3	200-3	63.5	37.85	39.68	19.85	206	214	60.33	8.0	71.55	106500	1044.76	138450	1358.19
48A-3	240-3	240-3	76.2	47.35	47.63	23.81	227.2	235.5	72.39	9.5	87.83	153200	1502.89	199160	1953.75

A Series Standard Roller Chain

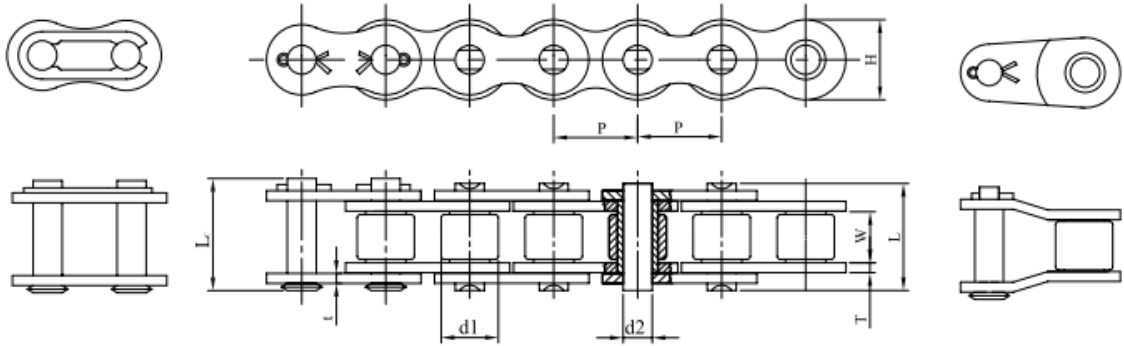
A Series Flat Plate Roller Chain



DXA Chain No	Pitch	Roller link width	Roller Outer Diameter	Pin outer Diameter	Pin length		Link Plate Height	Link Plate Thickness	Transverse Pitch of Strand	Tensile Strength				Allowed load	
	P	W min	d1 max	d2 max	L max	Lc max	H max	T	Pt	min		AVE		max	
	mm	mm	mm	mm	mm	mm	mm	mm	mm	kgf	kN	kgf	kN	kgf	kN
25F	6.35	3.1	3.3	2.31	8.0	8.8	6.02	0.75	-	500	4.90	550	5.39	100	0.98
25FH	6.35	3.1	3.3	2.31	9.0	10	5.9	1.0	-	520	5.10	600	5.88	110	1.07
35F	9.525	4.68	5.08	3.6	12.15	13.4	9.05	1.15	-	810	7.94	1100	10.79	220	2.15
40F	12.7	7.85	7.92	3.98	17.8	21	12.07	1.5	-	1420	13.93	1950	19.12	370	3.62
50F	15.875	9.4	10.16	5.09	21.8	25	15.09	2.0	-	2230	21.87	3100	30.41	650	6.37
60F	19.05	12.57	11.91	5.96	26.9	31	18	2.35	-	4000	39.24	4200	41.2	920	9.02
80F	25.4	15.75	15.88	7.94	33.5	38	24.13	3.2	-	5680	55.72	7500	73.57	1500	14.71
40F-2	12.7	7.85	7.92	3.98	32.3	36.2	12.07	1.5	14.38	2840	27.86	3900	38.25	630	6.18
50F-2	15.875	9.4	10.16	5.09	39.9	44	15.09	2.0	18.11	4450	43.65	6200	60.82	1100	10.79
60F-2	19.05	12.57	11.91	5.96	49.8	54.4	18	2.35	22.78	6400	62.78	8400	82.4	1530	15.00
100F-2	31.75	18.9	19.05	9.54	77	83.1	30.17	4.0	35.76	17740	174.02	24200	237.4	3900	38.25

B Series Standard Roller Chain

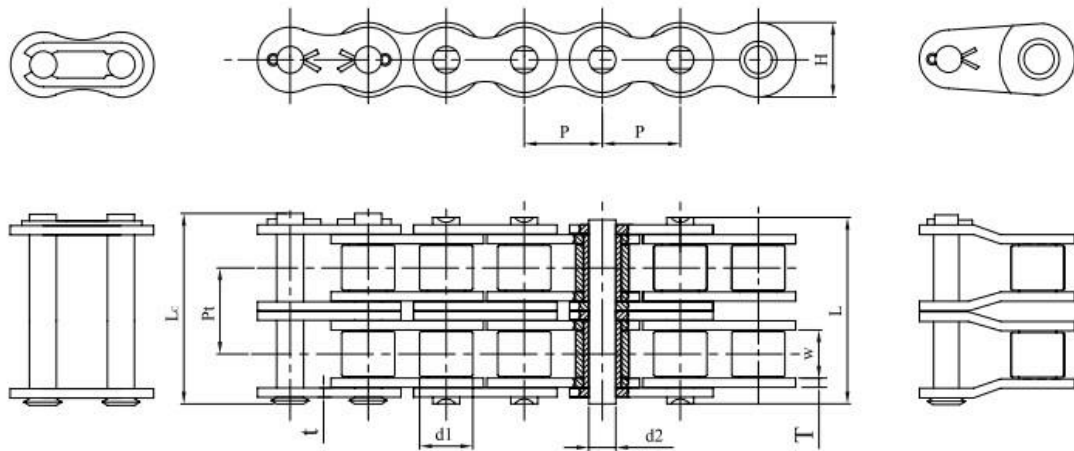
Single Strand roller chain



ISO Chain No	DXA Chain No	Pitch	Roller link width	Roller Outer Diameter	Pin outer Diameter	Pin length		Link Plate Height	Link Plate Thickness	Tensile Strength			
		P	W min	d1 max	d2 max	L max	Lc max	H max	T	min		AVE	
		mm	mm	mm	mm	mm	mm	mm	mm	kgf	kN	kgf	kN
04B	04B	6	2.8	4.1	1.85	7.4	10.3	5	0.6	306	3	320	3.13
05B	05B	8	3	5	2.31	8.6	11.7	7.11	0.75	500	4.9	600	5.88
06B	06B	9.525	5.72	6.35	3.28	13.5	16.8	8.26	1.4/1.1	910	8.92	1100	10.79
08B	08B	12.7	7.75	8.51	4.45	17	20.7	11.81	1.5	1820	17.85	1950	19.12
10B	10B	15.875	9.65	10.16	5.08	19.6	23.7	14.73	1.7	2270	22.26	2800	27.46
12B	12B	19.05	11.68	12.07	5.72	22.7	27.3	16.1	1.8	2950	28.93	3350	32.86
16B	16B	25.4	17.02	15.88	8.28	36.1	41.5	21	4.0/3.0	6130	60.13	7500	73.57
20B	20B	31.75	19.56	19.05	10.19	43.2	49.3	26.42	4.5/3.5	9700	95.15	10850	106.43
24B	24B	38.1	25.4	25.4	14.63	53.4	60	33.4	6.0/5.0	16330	160.19	18200	178.54
28B	28B	44.45	30.99	27.94	15.9	65.1	72.5	37.08	7.4/6.4	20410	200.22	23000	225.63
32B	32B	50.8	30.99	29.21	17.81	67.4	75.3	42.29	7.0/6.0	25520	250.35	28500	279.58
40B	40B	63.5	38.1	39.37	22.89	82.6	92.6	52.96	8.5/8.0	36230	355.41	40500	397.3
48B	48B	76.2	45.72	48.26	29.24	99.1	109.1	63.88	12.0/9.5	57150	560.64	63500	622.93

B Series Standard Roller Chain

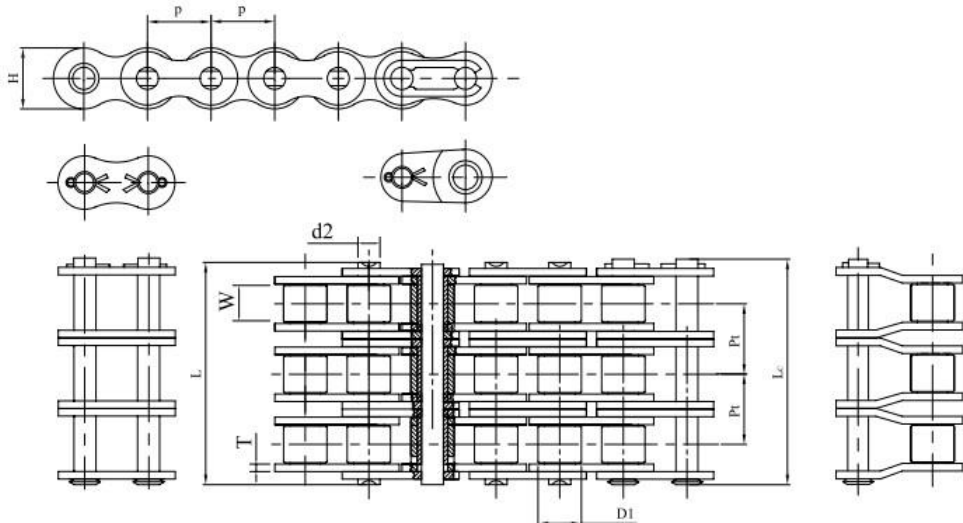
Double Strand roller chain



ISO Chain No	DXA Chain No	Pitch	Roller link width	Roller Outer Diameter	Pin outer Diameter	Pin length		Link Plate Height	Link Plate Thickness	Transverse Pitch of Strand	Tensile Strength						
						L max	Lc max				H max	T	Pt	min		AVE	
						mm	mm				mm	mm	mm	mm	mm	kgf	kN
05B-2R	05B-2R	8	3	5	2.31	14.3	17.4	7.11	0.75	5.64	800	7.84	1050	10.3			
06B-2R	06B-2R	9.525	5.72	6.35	3.28	23.8	27.1	8.26	1.4/1.1	10.24	1730	16.97	1900	18.63			
08B-2R	08B-2R	12.7	7.75	8.51	4.45	31	34.9	11.81	1.5	13.92	3180	31.19	3850	37.76			
10B-2R	10B-2R	15.875	9.65	10.16	5.08	36.2	40.3	14.73	1.7	16.59	4550	44.63	5600	54.93			
12B-2R	12B-2R	19.05	11.68	12.07	5.72	42.2	46.8	16.1	1.8	19.46	5900	57.87	6500	63.76			
16B-2R	16B-2R	25.4	17.02	15.88	8.28	68	73.4	21	4.0/3.0	31.88	10820	106.14	15000	147.15			
20B-2R	20B-2R	31.75	19.56	19.05	10.19	79	85.1	26.42	4.5/3.5	36.45	17350	170.2	21700	212.87			
24B-2R	24B-2R	38.1	25.4	25.4	14.63	101	107.6	33.4	6.0/5.0	48.36	28580	280.36	36400	357.08			
28B-2R	28B-2R	44.45	30.99	27.94	15.9	124	131.4	37.08	7.4/6.4	59.56	36740	360.41	46000	451.26			
32B-2R	32B-2R	50.8	30.99	29.21	17.81	126	133.9	42.29	7.0/6.0	58.55	45920	450.47	57000	559.17			
40B-2R	40B-2R	63.5	38.1	39.37	22.89	154	164	52.96	8.5/8.0	72.29	64290	630.68	81000	794.61			
48B-2R	48B-2R	76.2	45.72	48.26	29.24	190	200	63.88	12.0/9.5	91.21	102050	1001.11	127000	1245.87			

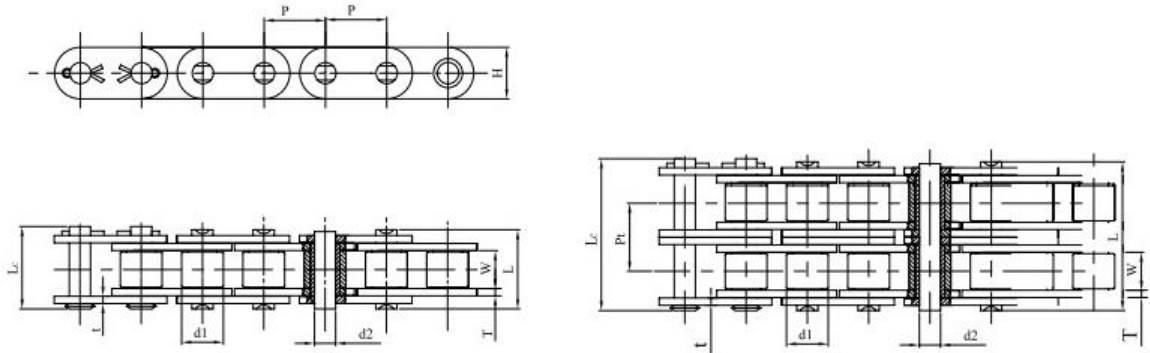
B Series Standard Roller Chain

Three Strand roller chain



ISO Chain No	DXA Chain No	Pitch	Roller link width	Roller Outer Diameter	Pin outer Diameter	Pin length		Link Plate Height	Link Plate Thickness	Transverse Pitch of Strand	Tensile Strength						
						L max	Lc max				H max	T	Pt	min		AVE	
														mm	mm	mm	mm
05B-3R	05B-3R	8	3	5	2.31	20.9	22.9	7.11	0.75	5.65	1135	11.13	1474	14.45			
06B-3R	06B-3R	9.525	5.72	6.35	3.28	34.05	37	8.26	1.4/1.1	10.24	2545	24.96	3308	32.45			
08B-3R	08B-3R	12.7	7.75	8.51	4.45	44.9	48	11.81	1.5	13.92	4550	44.63	5915	58.02			
10B-3R	10B-3R	15.875	9.65	10.16	5.08	53.2	56	14.73	1.7	16.59	6850	67.19	8905	87.35			
12B-3R	12B-3R	19.05	11.68	12.07	5.72	61.7	65.7	16.1	1.8	19.46	8850	86.81	11505	112.86			
16B-3R	16B-3R	25.4	17.02	15.88	8.28	99.9	104	21	4.0/3.0	31.88	16500	161.86	21450	210.42			
20B-3R	20B-3R	31.75	19.56	19.05	10.19	116.1	121	26.42	4.5/3.5	36.45	25550	250.64	33215	325.83			
24B-3R	24B-3R	38.1	25.4	25.4	14.63	150.2	155.2	33.4	6.0/5.0	48.36	44000	431.64	47000	461.07			
28B-3R	28B-3R	44.45	30.99	27.94	15.9	184.3	190.3	37.08	7.4/6.4	59.56	54100	530.72	60000	588.6			
32B-3R	32B-3R	50.8	30.99	29.21	17.81	184.5	190.5	42.29	7.0/6.0	58.55	68400	671	75000	735.75			
40B-3R	40B-3R	63.5	38.1	39.37	22.89	227.2	234.2	52.96	8.5/8.0	72.29	97000	951.57	120000	1177.2			
48B-3R	48B-3R	76.2	45.72	48.26	29.24	281.6	288.6	63.88	12.0/9.5	91.21	153000	1500.93	180000	1765.8			

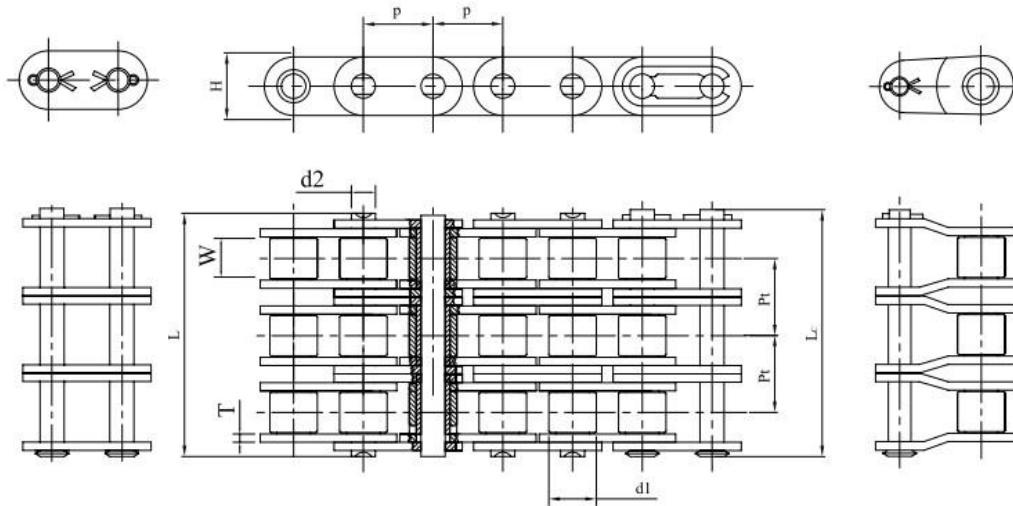
B Series Flat Plate Roller Chain



DXA Chain No	Pitch	Roller link width	Roller Outer Diameter	Pin outer Diameter	Pin length		Link Plate Height	Link Plate Thickness	Transverse Pitch of Strand	Tensile Strength			
					L max	Lc max				min		AVE	
					mm	mm				mm	mm	kgf	kN
08BF	12.7	7.75	8.51	4.45	17	20.7	11.81	1.5	-	1820	17.85	1950	19.12
10BF	15.875	9.65	10.16	5.08	19.6	23.7	14.73	1.7	-	2270	22.26	2800	27.46
12BF	19.05	11.68	12.07	5.72	22.7	27.3	16.1	1.8	-	2950	28.93	3250	31.88
16BF	25.4	17.02	15.88	8.28	36.1	41.5	21	4.0/3.0	-	6130	60.13	7500	73.57
20BF	31.75	19.56	19.05	10.19	43.2	49.3	26.42	4.5/3.5	-	9700	95.15	10850	106.43
24BF	38.1	25.4	25.4	14.63	53.4	60	33.4	6.0/5.0	-	16330	160.19	18200	178.54
28BF	44.45	30.99	27.94	15.9	65.1	72.5	37.08	7.4/6.4	-	20410	200.22	23000	225.63
32BF	50.8	30.99	29.21	17.81	67.4	75.3	42.29	7.0/6.0	-	25520	250.35	28500	279.58
08BF-2	12.7	7.75	8.51	4.45	31	34.9	11.81	1.5	13.92	3180	31.19	3850	37.76
10BF-2	15.875	9.65	10.16	5.08	36.2	40.3	14.73	1.7	16.59	4550	44.63	5600	54.93
12BF-2	19.05	11.68	12.07	5.72	42.2	46.8	16.1	1.8	19.46	5900	57.87	6500	63.76
16BF-2	25.4	17.02	15.88	8.28	68	73.4	21	4.0/3.0	31.88	10820	106.14	15000	147.15
20BF-2	31.75	19.56	19.05	10.19	79	85.1	26.42	4.5/3.5	36.45	17350	170.2	21700	212.87
24BF-2	38.1	25.4	25.4	14.63	101	107.6	33.4	6.0/5.0	48.36	28580	280.36	36400	357.08
28BF-2	44.45	30.99	27.94	15.9	124	131.4	37.08	7.4/6.4	59.56	36740	360.41	46000	451.26
32BF-2	50.8	30.99	29.21	17.81	126	133.9	42.29	7.0/6.0	58.55	45920	450.47	57000	559.17

B Series Flat Plate Roller Chain

Three Strand roller chain



DXA Chain No	Pitch	Roller link width	Roller Outer Diameter	Pin outer Diameter	Pin length		Link Plate Height	Link Plate Thickness	Transverse Pitch of Strand	Tensile Strength			
	P	W min	d1 max	d2 max	L max	Lc max	H max	T	Pt	min		AVE	
	mm	mm	mm	mm	mm	mm	mm	mm	mm	kgf	kN	kgf	kN
08BF-3	12.7	7.75	8.51	4.45	44.9	48	11.81	1.5	13.92	4550	44.63	5915	58.02
10BF-3	15.875	9.65	10.16	5.08	52.8	56	14.73	1.7	16.59	6850	67.19	8905	87.35
12BF-3	19.05	11.68	12.07	5.72	61.7	65.7	16.1	1.8	19.46	8850	86.81	11505	112.86
16BF-3	25.4	17.02	15.88	8.28	99.9	104	21	4.0/3.0	31.88	16500	161.86	21450	210.42
20BF-3	31.75	19.56	19.05	10.19	116.1	121	26.42	4.5/3.5	36.45	25550	250.64	33215	325.83
24BF-3	38.1	25.4	25.4	14.63	150.2	155.2	33.4	6.0/5.0	48.36	44000	431.64	47000	461.07
28BF-3	44.45	30.99	27.94	15.9	184.3	190.3	37.08	7.4/6.4	59.56	54100	530.72	60000	588.6
32BF-3	50.8	30.99	29.21	17.81	184.5	190.5	42.29	7.0/6.0	58.55	68400	671	75000	735.75